

TA-E9000ES

SONY

SERVICE MANUAL

2002.08

*US Model
Canadian Model
AEP Model
UK Model
E Model
Australian Model
Chinese Model*

SUPPLEMENT - 1

File this Supplement with the Service Manual.

Subject :

- **CHANGE OF DIGITAL BOARD AND POWER BOARD**

● CHANGE OF BOARDS

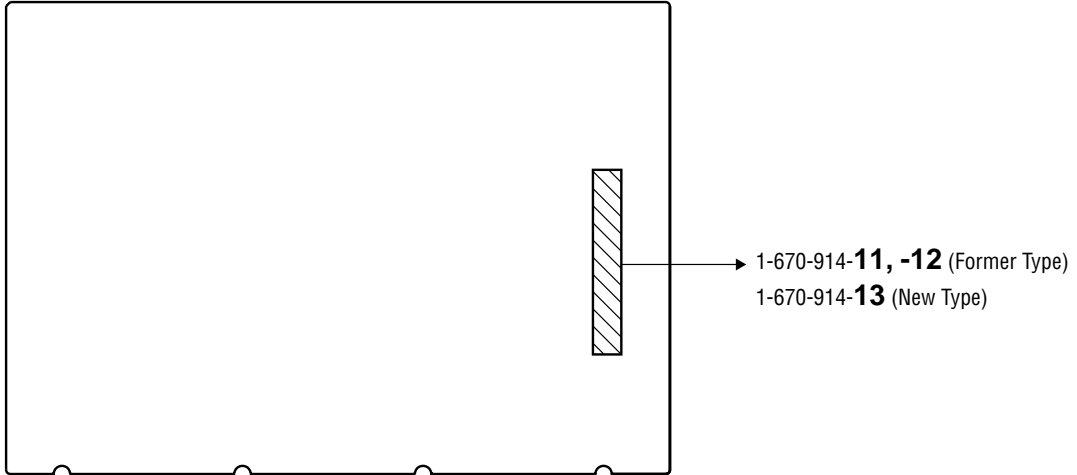
The digital board and power board has been changed.

Printed wiring board and schematic diagram of new type, and changed parts list are described in this Supplement-1.

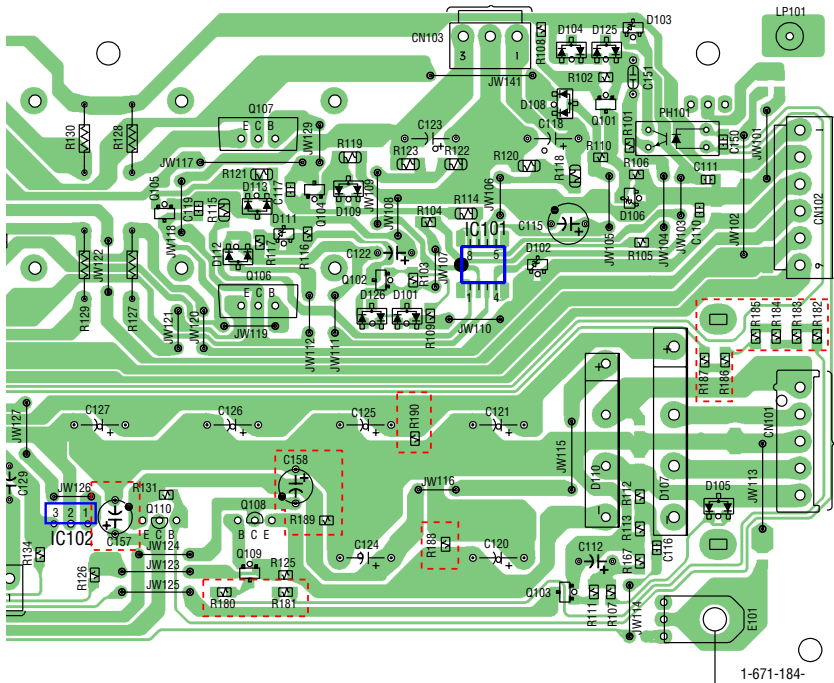
Refer to original service manual (9-928-800-12) previously issued for the other information.

NEW TYPE IDENTIFICATION

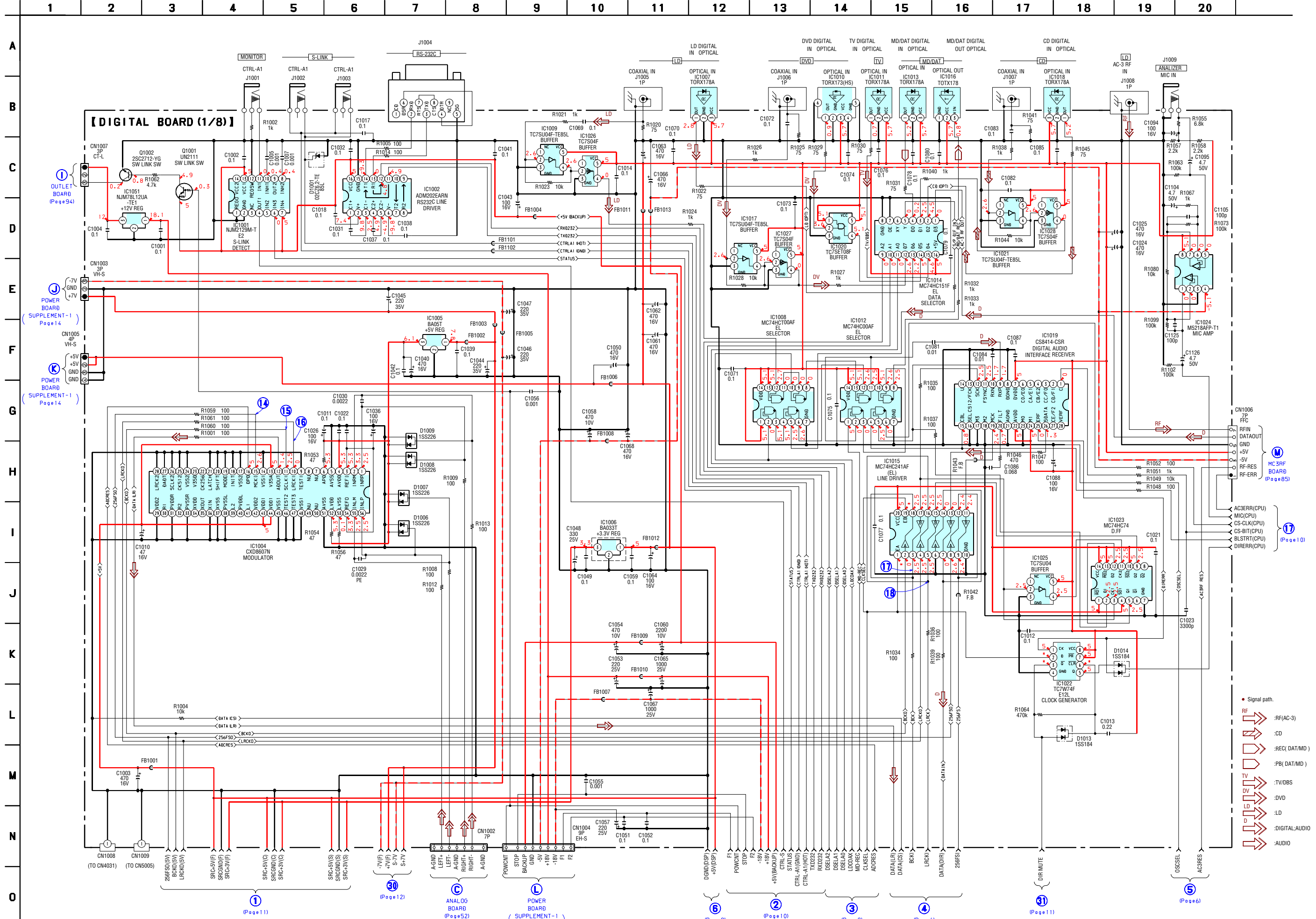
【DIGITAL BOARD】 (SIDE B)



【POWER BOARD】 There are parts in the new type.



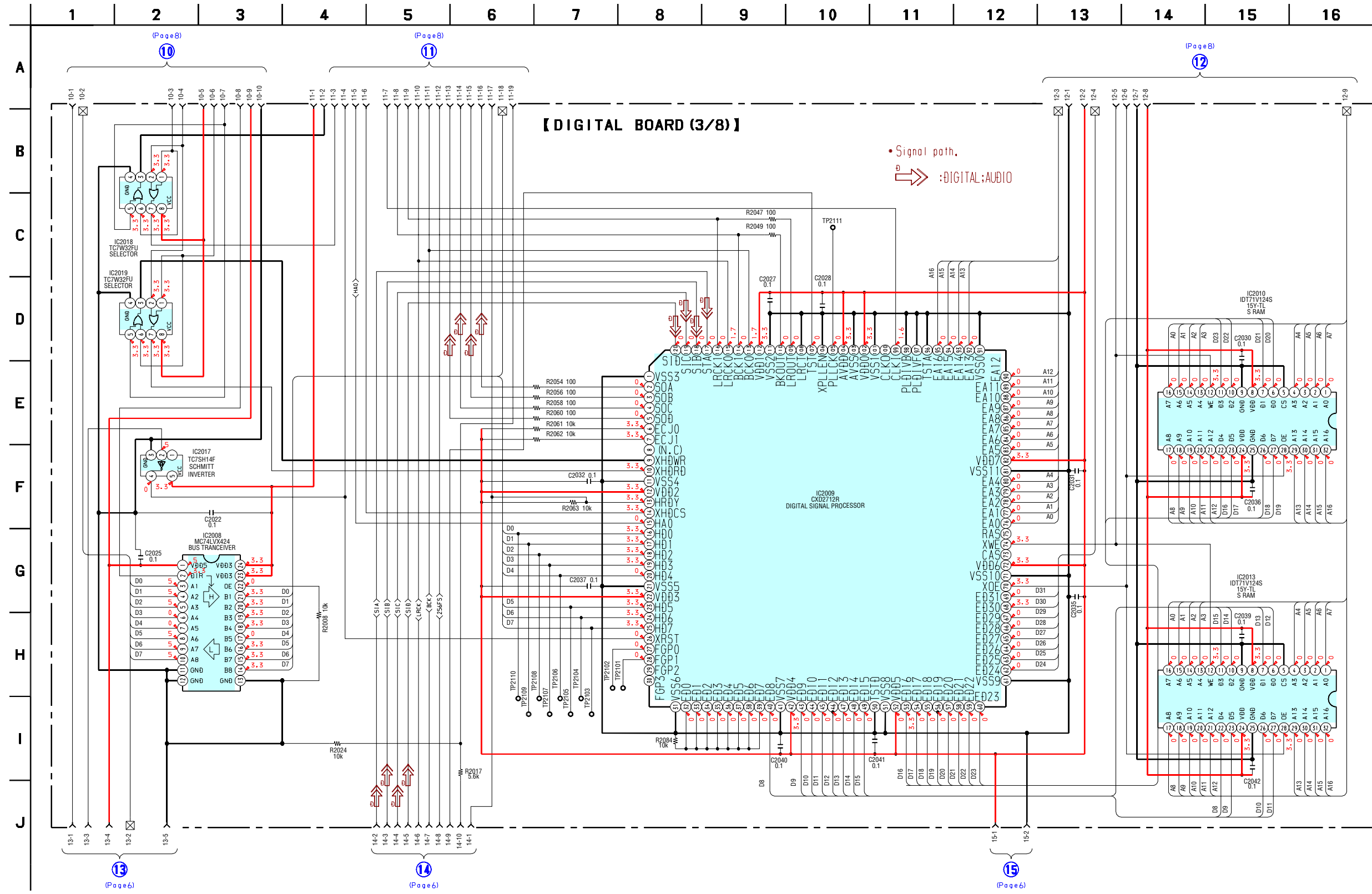
SCHEMATIC DIAGRAM – DIGITAL (1/8) SECTION – Last digit-13 • SEE PAGE 41 FOR WAVEFORMS. • SEE PAGE 99 FOR IC BLOCK DIAGRAMS.



- Signal path.
- RF (AC-3)
- CD
- REC (DAT/MD)
- PB (DAT/MD)
- TV/DBS
- DVD
- LD
- DIGITAL-AUDIO
- AUDIO

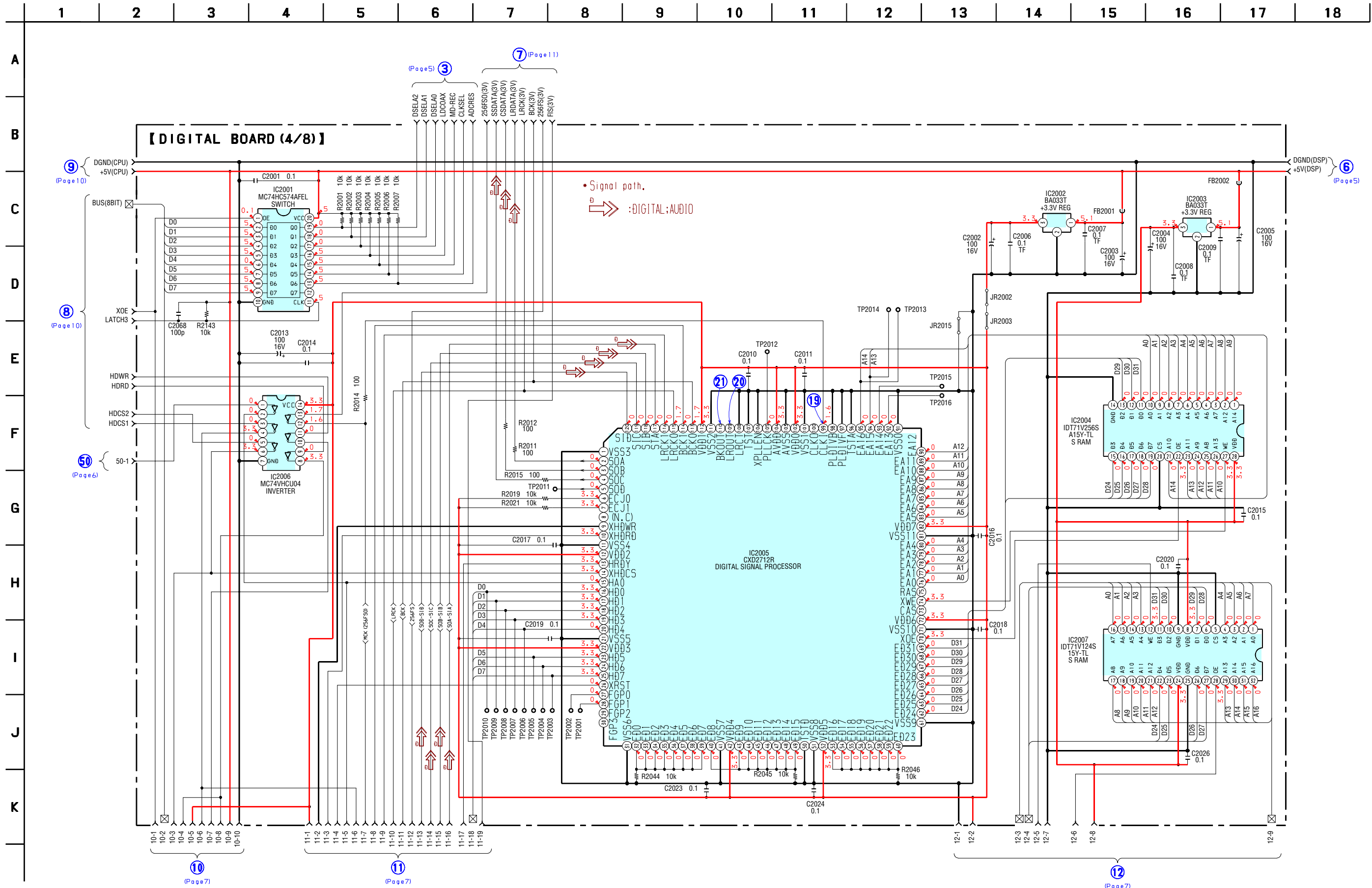
SCHEMATIC DIAGRAM – DIGITAL (3/8) SECTION – Last digit-13

- See page 100 for IC Block Diagrams.
- See page 102 for IC Pin Functions.



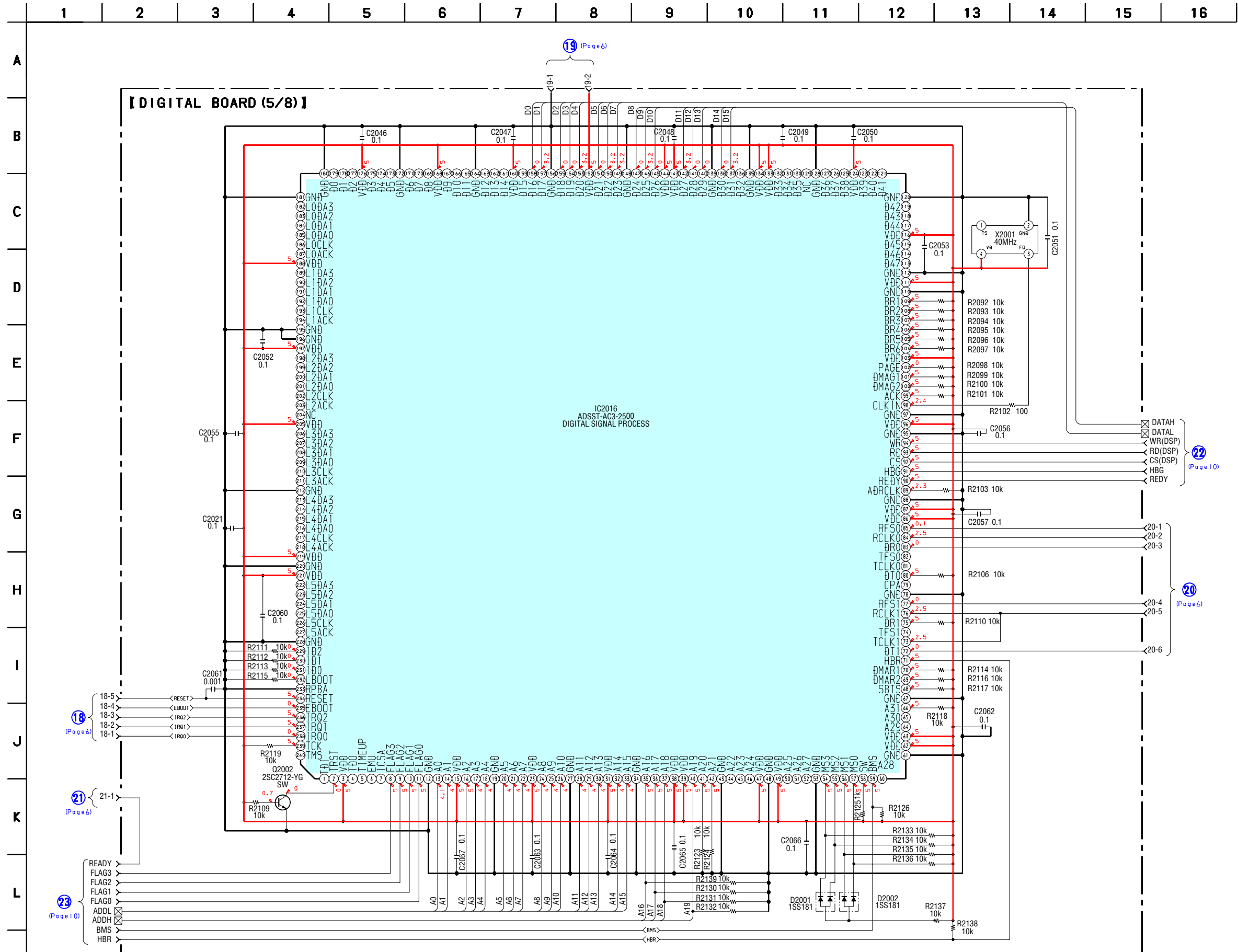
SCHEMATIC DIAGRAM – DIGITAL (4/8) SECTION – Last digit-13

- See page 42 for Waveforms.
- See page 102 for IC Pin Functions.

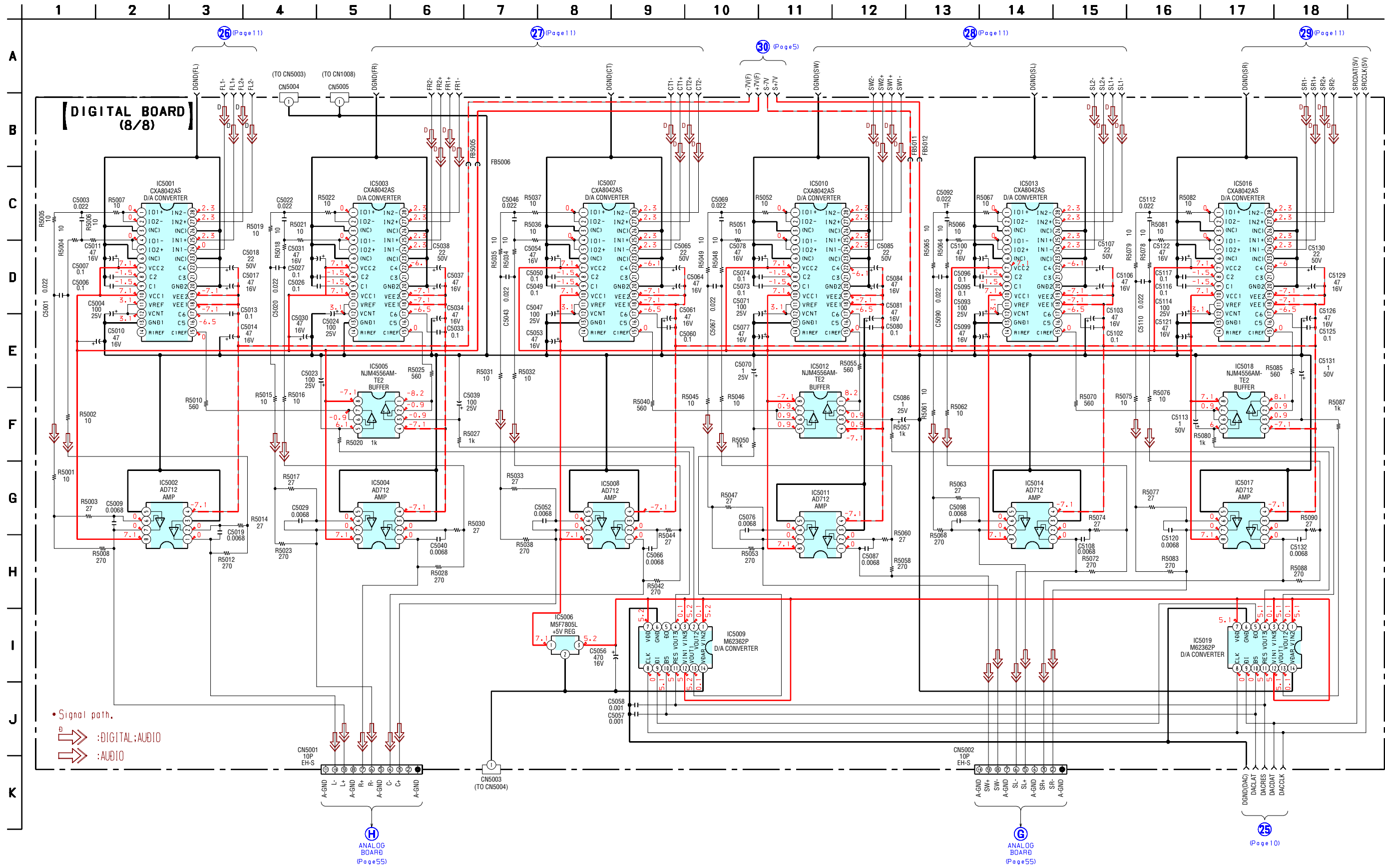


SCHEMATIC DIAGRAM – DIGITAL (5/8) SECTION – Last digit-13

- See page 59 for Printed Wiring Board.
- See page 106 for IC Pin Functions.



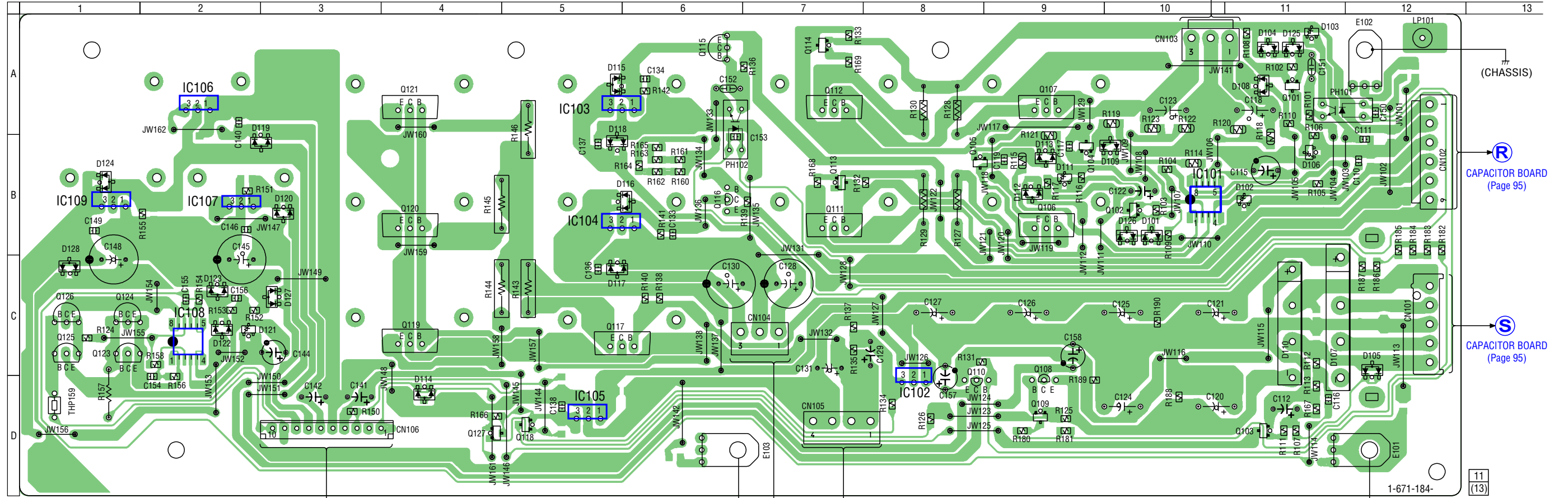
SCHEMATIC DIAGRAM – DIGITAL (8/8) SECTION – Last digit-13
 • See page 101 for IC Block Diagrams.



PRINTED WIRING BOARD – POWER SECTION –

New Type

【POWER BOARD】



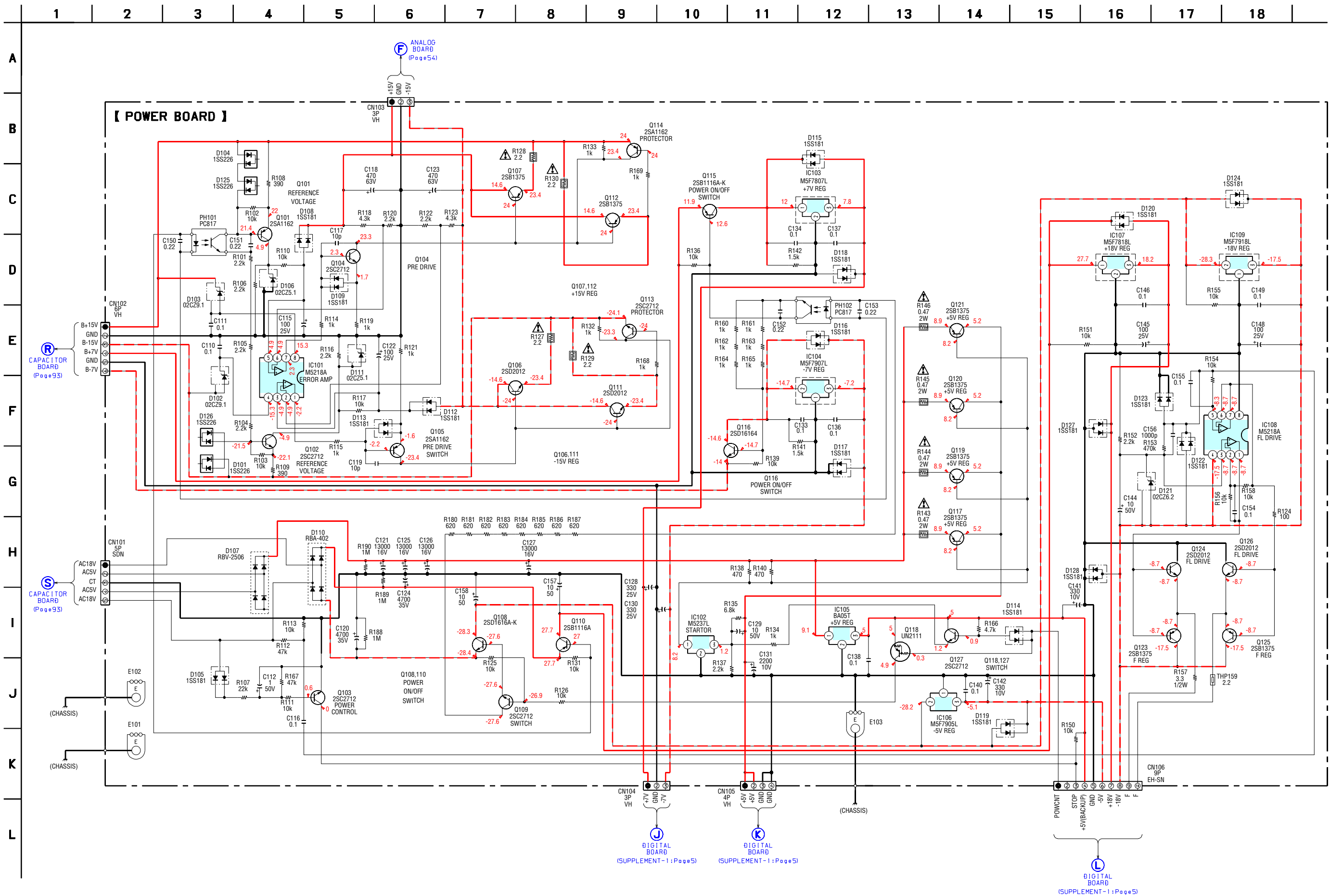
L
DIGITAL BOARD
(SUPPLEMENT-1: Page 3)

J **K**
DIGITAL BOARD
(SUPPLEMENT-1: Page 3)

• Semiconductor Location

Ref. No.	Location	Ref. No.	Location	Ref. No.	Location
D101	B-10	IC101	B-10	Q119	C-4
D102	B-11	IC102	D-8	Q120	B-4
D103	A-11	IC103	A-5	Q121	A-4
D104	A-11	IC104	B-5	Q123	C-1
D105	D-12	IC105	D-5	Q124	C-1
D106	B-11	IC106	A-2	Q125	C-1
D107	C-11	IC107	B-2	Q126	C-1
D108	A-11	IC108	C-2	Q127	D-4
D109	B-10	IC109	B-1		
D110	D-11				
D111	B-9	Q101	A-11		
D112	B-9	Q102	B-10		
D113	B-9	Q103	D-11		
D114	D-4	Q104	B-9		
D115	A-5	Q105	B-8		
D116	B-6	Q106	B-9		
D117	C-5	Q107	A-9		
D118	B-6	Q108	D-9		
D119	B-2	Q109	D-9		
D120	B-3	Q110	D-8		
D121	C-2	Q111	B-7		
D122	C-2	Q112	A-7		
D123	C-2	Q113	B-7		
D124	B-1	Q114	A-7		
D125	A-11	Q115	A-6		
D126	B-10	Q116	B-6		
D127	C-3	Q117	C-5		
D128	C-1	Q118	D-5		

SCHEMATIC DIAGRAM – POWER SECTION – New Type



ELECTRICAL PARTS LIST

DIGITAL

Note:

以阴影和△标志来识别的零部件在安全方面具有关键性。因此只能以规定号码的零部件来更换。

The components identified by mark △ or dotted line with mark △ are critical for safety. Replace only with part number specified.

Les composants identifiés par une marque △ sont critiques pour la sécurité. Ne les remplacer que par une pièce portant le numéro spécifié.

When indicating parts by reference number, please include the board name.

- Due to standardization, replacements in the parts list may be different from the parts specified in the diagrams or the components used on the set.
- -XX, -X mean standardized parts, so they may have some difference from the original one.
- Items marked "*" are not stocked since they are seldom required for routine service. Some delay should be anticipated when ordering these items.
- RESISTORS
All resistors are in ohms
METAL: Metal-film resistor
METAL OXIDE: Metal Oxide-film resistor
F : nonflammable

- SEMICONDUCTORS
In each case, u: μ , for example:
uA...: μ A..., uPA...: μ PA..., uPB...: μ PB...,
uPC...: μ PC..., uPD...: μ PD...
- CAPACITORS
uF : μ F
- COILS
uH : μ H
- Abbreviation
CND : Canadian model

Ref. No.	Part No.	Description	Remark	Ref. No.	Part No.	Description	Remark
*	A-4417-106-A	DIGITAL BOARD, COMPLETE (US,CND)		C1051	1-164-004-11	CERAMIC CHIP 0.1uF 10%	25V
*	A-4419-255-A	DIGITAL BOARD, COMPLETE (EXCEPT US,CND)		C1052	1-164-004-11	CERAMIC CHIP 0.1uF 10%	25V
		*****		C1053	1-104-666-11	ELECT 220uF 20%	25V
	4-974-510-01	SCREW (+BV 3X8 CU)		C1054	1-126-935-11	ELECT 470uF 20%	10V
		<CAPACITOR>		C1055	1-163-009-91	CERAMIC CHIP 0.001uF 10%	50V
				C1056	1-163-009-91	CERAMIC CHIP 0.001uF 10%	50V
C1001	1-164-004-11	CERAMIC CHIP 0.1uF 10%	25V	C1057	1-104-666-11	ELECT 220uF 20%	25V
C1002	1-164-004-11	CERAMIC CHIP 0.1uF 10%	25V	C1058	1-126-935-11	ELECT 470uF 20%	10V
C1003	1-119-792-21	ELECT 470uF 20%	16V	C1059	1-164-004-11	CERAMIC CHIP 0.1uF 10%	25V
C1004	1-164-004-11	CERAMIC CHIP 0.1uF 10%	25V	C1060	1-126-927-11	ELECT 2200uF 20%	10V
C1005	1-163-009-91	CERAMIC CHIP 0.001uF 10%	50V	C1061	1-119-792-21	ELECT 470uF 20%	16V
C1006	1-164-004-11	CERAMIC CHIP 0.1uF 10%	25V	C1062	1-119-792-21	ELECT 470uF 20%	16V
C1007	1-163-009-91	CERAMIC CHIP 0.001uF 10%	50V	C1063	1-119-792-21	ELECT 470uF 20%	16V
C1010	1-119-799-11	ELECT 47uF 20%	16V	C1064	1-119-800-11	ELECT 100uF 20%	16V
C1011	1-136-850-11	MYLAR 0.1uF 5%	63V	C1065	1-126-942-61	ELECT 1000uF 20%	25V
C1012	1-164-004-11	CERAMIC CHIP 0.1uF 10%	25V	C1066	1-119-792-21	ELECT 470uF 20%	16V
C1013	1-164-489-11	CERAMIC CHIP 0.22uF 10%	16V	C1067	1-126-942-61	ELECT 1000uF 20%	25V
C1014	1-164-004-11	CERAMIC CHIP 0.1uF 10%	25V	C1068	1-119-792-21	ELECT 470uF 20%	16V
C1017	1-164-004-11	CERAMIC CHIP 0.1uF 10%	25V	C1069	1-164-004-11	CERAMIC CHIP 0.1uF 10%	25V
C1018	1-164-004-11	CERAMIC CHIP 0.1uF 10%	25V	C1071	1-164-004-11	CERAMIC CHIP 0.1uF 10%	25V
C1021	1-164-004-11	CERAMIC CHIP 0.1uF 10%	25V	C1072	1-164-004-11	CERAMIC CHIP 0.1uF 10%	25V
C1022	1-136-850-11	MYLAR 0.1uF 5%	63V	C1075	1-164-004-11	CERAMIC CHIP 0.1uF 10%	25V
C1023	1-164-182-11	CERAMIC CHIP 0.0033uF 10%	50V	C1076	1-164-004-11	CERAMIC CHIP 0.1uF 10%	25V
C1024	1-119-792-21	ELECT 470uF 20%	16V	C1077	1-164-004-11	CERAMIC CHIP 0.1uF 10%	25V
C1025	1-119-792-21	ELECT 470uF 20%	16V	C1078	1-164-004-11	CERAMIC CHIP 0.1uF 10%	25V
C1026	1-119-800-11	ELECT 100uF 20%	16V	C1079	1-164-004-11	CERAMIC CHIP 0.1uF 10%	25V
C1029	1-130-475-00	MYLAR 0.0022uF 5%	50V	C1080	1-164-004-11	CERAMIC CHIP 0.1uF 10%	25V
C1030	1-130-475-00	MYLAR 0.0022uF 5%	50V	C1081	1-163-031-91	CERAMIC CHIP 0.01uF 50V	
C1031	1-164-004-11	CERAMIC CHIP 0.1uF 10%	25V	C1082	1-164-004-11	CERAMIC CHIP 0.1uF 10%	25V
C1032	1-164-004-11	CERAMIC CHIP 0.1uF 10%	25V	C1083	1-164-004-11	CERAMIC CHIP 0.1uF 10%	25V
C1036	1-119-800-11	ELECT 100uF 20%	16V	C1084	1-163-031-91	CERAMIC CHIP 0.01uF 50V	
C1037	1-164-004-11	CERAMIC CHIP 0.1uF 10%	25V	C1085	1-164-004-11	CERAMIC CHIP 0.1uF 10%	25V
C1038	1-164-004-11	CERAMIC CHIP 0.1uF 10%	25V	C1086	1-164-344-11	CERAMIC CHIP 0.068uF 10%	25V
C1039	1-136-165-00	MYLAR 0.1uF 5%	50V	C1087	1-164-004-11	CERAMIC CHIP 0.1uF 10%	25V
C1040	1-119-792-21	ELECT 470uF 20%	16V	C1088	1-119-800-11	ELECT 100uF 20%	16V
C1041	1-164-004-11	CERAMIC CHIP 0.1uF 10%	25V	C1094	1-126-933-11	ELECT 100uF 20%	16V
C1042	1-136-165-00	MYLAR 0.1uF 5%	50V	C1095	1-126-963-11	ELECT 4.7uF 20%	50V
C1043	1-119-800-11	ELECT 100uF 20%	16V	C1104	1-126-963-11	ELECT 4.7uF 20%	50V
C1044	1-119-811-21	ELECT 220uF 20%	35V	C1105	1-163-117-00	CERAMIC CHIP 100PF 5%	50V
C1045	1-119-811-21	ELECT 220uF 20%	35V	C1125	1-163-117-00	CERAMIC CHIP 100PF 5%	50V
C1046	1-119-811-21	ELECT 220uF 20%	35V	C1126	1-126-963-11	ELECT 4.7uF 20%	50V
C1047	1-119-811-21	ELECT 220uF 20%	35V	C2001	1-164-004-11	CERAMIC CHIP 0.1uF 10%	25V
C1048	1-119-830-11	ELECT 330uF 20%	25V	C2002	1-119-800-11	ELECT 100uF 20%	16V
C1049	1-164-004-11	CERAMIC CHIP 0.1uF 10%	25V	C2003	1-119-800-11	ELECT 100uF 20%	16V
C1050	1-119-792-21	ELECT 470uF 20%	16V	C2004	1-119-800-11	ELECT 100uF 20%	16V

DIGITAL

Ref. No.	Part No.	Description			Remark	Ref. No.	Part No.	Description			Remark
C2005	1-119-800-11	ELECT	100uF	20%	16V	C2065	1-164-004-11	CERAMIC CHIP	0.1uF	10%	25V
C2006	1-136-165-00	MYLAR	0.1uF	5%	50V	C2066	1-164-004-11	CERAMIC CHIP	0.1uF	10%	25V
C2007	1-136-165-00	MYLAR	0.1uF	5%	50V	C2067	1-164-004-11	CERAMIC CHIP	0.1uF	10%	25V
C2008	1-136-165-00	MYLAR	0.1uF	5%	50V	C2068	1-163-117-00	CERAMIC CHIP	100PF	5%	50V
C2009	1-136-165-00	MYLAR	0.1uF	5%	50V	C2069	1-163-117-00	CERAMIC CHIP	100PF	5%	50V
C2010	1-164-004-11	CERAMIC CHIP	0.1uF	10%	25V	C2070	1-163-117-00	CERAMIC CHIP	100PF	5%	50V
C2011	1-164-004-11	CERAMIC CHIP	0.1uF	10%	25V	C3001	1-164-004-11	CERAMIC CHIP	0.1uF	10%	25V
C2013	1-119-800-11	ELECT	100uF	20%	16V	C3002	1-164-004-11	CERAMIC CHIP	0.1uF	10%	25V
C2014	1-164-004-11	CERAMIC CHIP	0.1uF	10%	25V	C3003	1-164-004-11	CERAMIC CHIP	0.1uF	10%	25V
C2015	1-164-004-11	CERAMIC CHIP	0.1uF	10%	25V	C3004	1-164-004-11	CERAMIC CHIP	0.1uF	10%	25V
C2016	1-164-004-11	CERAMIC CHIP	0.1uF	10%	25V	C3005	1-119-799-11	ELECT	47uF	20%	16V
C2017	1-164-004-11	CERAMIC CHIP	0.1uF	10%	25V	C3006	1-163-009-91	CERAMIC CHIP	0.001uF	10%	50V
C2018	1-164-004-11	CERAMIC CHIP	0.1uF	10%	25V	C3007	1-164-004-11	CERAMIC CHIP	0.1uF	10%	25V
C2019	1-164-004-11	CERAMIC CHIP	0.1uF	10%	25V	C3008	1-164-004-11	CERAMIC CHIP	0.1uF	10%	25V
C2020	1-164-004-11	CERAMIC CHIP	0.1uF	10%	25V	C3009	1-163-117-00	CERAMIC CHIP	100PF	5%	50V
C2021	1-164-004-11	CERAMIC CHIP	0.1uF	10%	25V	C3010	1-163-009-91	CERAMIC CHIP	0.001uF	10%	50V
C2022	1-164-004-11	CERAMIC CHIP	0.1uF	10%	25V	C3011	1-164-004-11	CERAMIC CHIP	0.1uF	10%	25V
C2023	1-164-004-11	CERAMIC CHIP	0.1uF	10%	25V	C3012	1-163-009-91	CERAMIC CHIP	0.001uF	10%	50V
C2024	1-164-004-11	CERAMIC CHIP	0.1uF	10%	25V	C3013	1-164-004-11	CERAMIC CHIP	0.1uF	10%	25V
C2025	1-164-004-11	CERAMIC CHIP	0.1uF	10%	25V	C3014	1-163-117-00	CERAMIC CHIP	100PF	5%	50V
C2026	1-164-004-11	CERAMIC CHIP	0.1uF	10%	25V	C3015	1-164-004-11	CERAMIC CHIP	0.1uF	10%	25V
C2027	1-164-004-11	CERAMIC CHIP	0.1uF	10%	25V	C3016	1-163-009-91	CERAMIC CHIP	0.001uF	10%	50V
C2028	1-164-004-11	CERAMIC CHIP	0.1uF	10%	25V	C3017	1-163-031-91	CERAMIC CHIP	0.01uF		50V
C2030	1-164-004-11	CERAMIC CHIP	0.1uF	10%	25V	C3018	1-164-004-11	CERAMIC CHIP	0.1uF	10%	25V
C2031	1-164-004-11	CERAMIC CHIP	0.1uF	10%	25V	C3019	1-164-004-11	CERAMIC CHIP	0.1uF	10%	25V
C2032	1-164-004-11	CERAMIC CHIP	0.1uF	10%	25V	C3020	1-164-004-11	CERAMIC CHIP	0.1uF	10%	25V
C2033	1-164-004-11	CERAMIC CHIP	0.1uF	10%	25V	C3021	1-119-799-11	ELECT	47uF	20%	16V
C2034	1-164-004-11	CERAMIC CHIP	0.1uF	10%	25V	C3022	1-119-799-11	ELECT	47uF	20%	16V
C2035	1-164-004-11	CERAMIC CHIP	0.1uF	10%	25V	C3023	1-164-004-11	CERAMIC CHIP	0.1uF	10%	25V
C2036	1-164-004-11	CERAMIC CHIP	0.1uF	10%	25V	C3024	1-164-004-11	CERAMIC CHIP	0.1uF	10%	25V
C2037	1-164-004-11	CERAMIC CHIP	0.1uF	10%	25V	C3025	1-119-792-21	ELECT	470uF	20%	16V
C2039	1-164-004-11	CERAMIC CHIP	0.1uF	10%	25V	C3026	1-164-004-11	CERAMIC CHIP	0.1uF	10%	25V
C2040	1-164-004-11	CERAMIC CHIP	0.1uF	10%	25V	C3027	1-164-004-11	CERAMIC CHIP	0.1uF	10%	25V
C2041	1-164-004-11	CERAMIC CHIP	0.1uF	10%	25V	C3028	1-164-004-11	CERAMIC CHIP	0.1uF	10%	25V
C2042	1-164-004-11	CERAMIC CHIP	0.1uF	10%	25V	C3029	1-164-004-11	CERAMIC CHIP	0.1uF	10%	25V
C2043	1-119-792-21	ELECT	470uF	20%	16V	C3030	1-163-117-00	CERAMIC CHIP	100PF	5%	50V
C2044	1-164-004-11	CERAMIC CHIP	0.1uF	10%	25V	C3031	1-163-117-00	CERAMIC CHIP	100PF	5%	50V
C2045	1-164-004-11	CERAMIC CHIP	0.1uF	10%	25V	C3032	1-164-004-11	CERAMIC CHIP	0.1uF	10%	25V
C2046	1-164-004-11	CERAMIC CHIP	0.1uF	10%	25V	C3033	1-164-004-11	CERAMIC CHIP	0.1uF	10%	25V
C2047	1-164-004-11	CERAMIC CHIP	0.1uF	10%	25V	C3034	1-164-004-11	CERAMIC CHIP	0.1uF	10%	25V
C2048	1-164-004-11	CERAMIC CHIP	0.1uF	10%	25V	C3036	1-119-800-11	ELECT	100uF	20%	16V
C2049	1-164-004-11	CERAMIC CHIP	0.1uF	10%	25V	C3037	1-119-800-11	ELECT	100uF	20%	16V
C2050	1-164-004-11	CERAMIC CHIP	0.1uF	10%	25V	C3038	1-163-117-00	CERAMIC CHIP	100PF	5%	50V
C2051	1-164-004-11	CERAMIC CHIP	0.1uF	10%	25V	C3039	1-163-117-00	CERAMIC CHIP	100PF	5%	50V
C2052	1-164-004-11	CERAMIC CHIP	0.1uF	10%	25V	C3101	1-163-117-00	CERAMIC CHIP	100PF	5%	50V
C2053	1-164-004-11	CERAMIC CHIP	0.1uF	10%	25V	C3102	1-164-004-11	CERAMIC CHIP	0.1uF	10%	25V
C2054	1-119-800-11	ELECT	100uF	20%	16V	C4001	1-119-792-21	ELECT	470uF	20%	16V
C2055	1-164-004-11	CERAMIC CHIP	0.1uF	10%	25V	C4002	1-136-850-11	MYLAR	0.1uF	5%	63V
C2056	1-164-004-11	CERAMIC CHIP	0.1uF	10%	25V	C4003	1-164-004-11	CERAMIC CHIP	0.1uF	10%	25V
C2057	1-164-004-11	CERAMIC CHIP	0.1uF	10%	25V	C4004	1-119-792-21	ELECT	470uF	20%	16V
C2058	1-164-004-11	CERAMIC CHIP	0.1uF	10%	25V	C4005	1-136-850-11	MYLAR	0.1uF	5%	63V
C2059	1-164-004-11	CERAMIC CHIP	0.1uF	10%	25V	C4006	1-164-004-11	CERAMIC CHIP	0.1uF	10%	25V
C2060	1-164-004-11	CERAMIC CHIP	0.1uF	10%	25V	C4008	1-163-009-91	CERAMIC CHIP	0.001uF	10%	50V
C2061	1-163-009-91	CERAMIC CHIP	0.001uF	10%	50V	C4013	1-136-850-11	MYLAR	0.1uF	5%	63V
C2062	1-164-004-11	CERAMIC CHIP	0.1uF	10%	25V	C4014	1-136-850-11	MYLAR	0.1uF	5%	63V
C2063	1-164-004-11	CERAMIC CHIP	0.1uF	10%	25V	C4015	1-164-004-11	CERAMIC CHIP	0.1uF	10%	25V
C2064	1-164-004-11	CERAMIC CHIP	0.1uF	10%	25V	C4016	1-163-117-00	CERAMIC CHIP	100PF	5%	50V
						C4017	1-119-792-21	ELECT	470uF	20%	16V

Ref. No.	Part No.	Description			Remark	Ref. No.	Part No.	Description			Remark
C4018	1-136-850-11	MYLAR	0.1uF	5%	63V	C4085	1-136-850-11	MYLAR	0.1uF	5%	63V
C4019	1-164-004-11	CERAMIC CHIP	0.1uF	10%	25V	C4086	1-164-004-11	CERAMIC CHIP	0.1uF	10%	25V
C4020	1-136-850-11	MYLAR	0.1uF	5%	63V	C4087	1-163-009-91	CERAMIC CHIP	0.001uF	10%	50V
C4021	1-136-850-11	MYLAR	0.1uF	5%	63V	C4088	1-136-850-11	MYLAR	0.1uF	5%	63V
C4022	1-119-800-11	ELECT	100uF	20%	16V	C4089	1-119-792-21	ELECT	470uF	20%	16V
C4023	1-164-004-11	CERAMIC CHIP	0.1uF	10%	25V	C4090	1-119-792-21	ELECT	470uF	20%	16V
C4024	1-164-004-11	CERAMIC CHIP	0.1uF	10%	25V	C4091	1-164-004-11	CERAMIC CHIP	0.1uF	10%	25V
C4025	1-136-850-11	MYLAR	0.1uF	5%	63V	C4106	1-164-004-11	CERAMIC CHIP	0.1uF	10%	25V
C4026	1-164-004-11	CERAMIC CHIP	0.1uF	10%	25V	C5001	1-130-305-51	FILM	0.022uF	5%	100V
C4027	1-163-009-91	CERAMIC CHIP	0.001uF	10%	50V	C5003	1-130-305-51	FILM	0.022uF	5%	100V
C4028	1-136-850-11	MYLAR	0.1uF	5%	63V	C5004	1-119-800-11	ELECT	100uF	20%	25V
C4029	1-119-792-21	ELECT	470uF	20%	16V	C5006	1-136-850-11	MYLAR	0.1uF	5%	63V
C4030	1-119-792-21	ELECT	470uF	20%	16V	C5007	1-136-850-11	MYLAR	0.1uF	5%	63V
C4031	1-119-792-21	ELECT	470uF	20%	16V	C5009	1-130-856-00	FILM	0.0068uF	5%	100V
C4032	1-136-850-11	MYLAR	0.1uF	5%	63V	C5010	1-119-799-11	ELECT	47uF	20%	16V
C4033	1-164-004-11	CERAMIC CHIP	0.1uF	10%	25V	C5011	1-119-799-11	ELECT	47uF	20%	16V
C4034	1-119-792-21	ELECT	470uF	20%	16V	C5013	1-136-850-11	MYLAR	0.1uF	5%	63V
C4035	1-136-850-11	MYLAR	0.1uF	5%	63V	C5014	1-119-799-11	ELECT	47uF	20%	16V
C4036	1-164-004-11	CERAMIC CHIP	0.1uF	10%	25V	C5017	1-119-799-11	ELECT	47uF	20%	16V
C4038	1-163-009-91	CERAMIC CHIP	0.001uF	10%	50V	C5018	1-119-825-41	ELECT	22uF	20%	50V
C4043	1-136-850-11	MYLAR	0.1uF	5%	63V	C5019	1-130-856-00	FILM	0.0068uF	5%	100V
C4044	1-136-850-11	MYLAR	0.1uF	5%	63V	C5020	1-130-305-51	FILM	0.022uF	5%	100V
C4045	1-164-004-11	CERAMIC CHIP	0.1uF	10%	25V	C5022	1-130-305-51	FILM	0.022uF	5%	100V
C4046	1-163-117-00	CERAMIC CHIP	100PF	5%	50V	C5023	1-119-820-31	ELECT	1uF	20%	50V
C4047	1-119-792-21	ELECT	470uF	20%	16V	C5024	1-119-800-11	ELECT	100uF	20%	25V
C4048	1-136-850-11	MYLAR	0.1uF	5%	63V	C5026	1-136-850-11	MYLAR	0.1uF	5%	63V
C4049	1-164-004-11	CERAMIC CHIP	0.1uF	10%	25V	C5027	1-136-850-11	MYLAR	0.1uF	5%	63V
C4050	1-136-850-11	MYLAR	0.1uF	5%	63V	C5029	1-130-856-00	FILM	0.0068uF	5%	100V
C4051	1-136-850-11	MYLAR	0.1uF	5%	63V	C5030	1-119-799-11	ELECT	47uF	20%	16V
C4052	1-119-800-11	ELECT	100uF	20%	16V	C5031	1-119-799-11	ELECT	47uF	20%	16V
C4053	1-164-004-11	CERAMIC CHIP	0.1uF	10%	25V	C5033	1-136-850-11	MYLAR	0.1uF	5%	63V
C4054	1-164-004-11	CERAMIC CHIP	0.1uF	10%	25V	C5034	1-119-799-11	ELECT	47uF	20%	16V
C4055	1-136-850-11	MYLAR	0.1uF	5%	63V	C5037	1-119-799-11	ELECT	47uF	20%	16V
C4056	1-164-004-11	CERAMIC CHIP	0.1uF	10%	25V	C5038	1-119-825-41	ELECT	22uF	20%	50V
C4057	1-163-009-91	CERAMIC CHIP	0.001uF	10%	50V	C5039	1-119-820-31	ELECT	1uF	20%	50V
C4058	1-136-850-11	MYLAR	0.1uF	5%	63V	C5040	1-130-856-00	FILM	0.0068uF	5%	100V
C4059	1-119-792-21	ELECT	470uF	20%	16V	C5043	1-130-305-51	FILM	0.022uF	5%	100V
C4060	1-119-792-21	ELECT	470uF	20%	16V	C5046	1-130-305-51	FILM	0.022uF	5%	100V
C4061	1-119-792-21	ELECT	470uF	20%	16V	C5047	1-119-800-11	ELECT	100uF	20%	25V
C4062	1-136-850-11	MYLAR	0.1uF	5%	63V	C5049	1-136-850-11	MYLAR	0.1uF	5%	63V
C4063	1-164-004-11	CERAMIC CHIP	0.1uF	10%	25V	C5050	1-136-850-11	MYLAR	0.1uF	5%	63V
C4064	1-119-792-21	ELECT	470uF	20%	16V	C5052	1-130-856-00	FILM	0.0068uF	5%	100V
C4065	1-136-850-11	MYLAR	0.1uF	5%	63V	C5053	1-119-799-11	ELECT	47uF	20%	16V
C4066	1-164-004-11	CERAMIC CHIP	0.1uF	10%	25V	C5054	1-119-799-11	ELECT	47uF	20%	16V
C4068	1-163-009-91	CERAMIC CHIP	0.001uF	10%	50V	C5056	1-119-792-21	ELECT	470uF	20%	16V
C4073	1-136-850-11	MYLAR	0.1uF	5%	63V	C5057	1-163-009-91	CERAMIC CHIP	0.001uF	10%	50V
C4074	1-136-850-11	MYLAR	0.1uF	5%	63V	C5058	1-163-009-91	CERAMIC CHIP	0.001uF	10%	50V
C4075	1-164-004-11	CERAMIC CHIP	0.1uF	10%	25V	C5060	1-136-850-11	MYLAR	0.1uF	5%	63V
C4076	1-163-117-00	CERAMIC CHIP	100PF	5%	50V	C5061	1-119-799-11	ELECT	47uF	20%	16V
C4077	1-119-792-21	ELECT	470uF	20%	16V	C5064	1-119-799-11	ELECT	47uF	20%	16V
C4078	1-136-850-11	MYLAR	0.1uF	5%	63V	C5065	1-119-825-41	ELECT	22uF	20%	50V
C4079	1-164-004-11	CERAMIC CHIP	0.1uF	10%	25V	C5066	1-130-856-00	FILM	0.0068uF	5%	100V
C4080	1-136-850-11	MYLAR	0.1uF	5%	63V	C5067	1-130-305-51	FILM	0.022uF	5%	100V
C4081	1-136-850-11	MYLAR	0.1uF	5%	63V	C5069	1-130-305-51	FILM	0.022uF	5%	100V
C4082	1-119-800-11	ELECT	100uF	20%	16V	C5070	1-119-820-31	ELECT	1uF	20%	50V
C4083	1-164-004-11	CERAMIC CHIP	0.1uF	10%	25V	C5071	1-119-800-11	ELECT	100uF	20%	25V
C4084	1-164-004-11	CERAMIC CHIP	0.1uF	10%	25V	C5073	1-136-850-11	MYLAR	0.1uF	5%	63V
						C5074	1-136-850-11	MYLAR	0.1uF	5%	63V

DIGITAL

Ref. No.	Part No.	Description	Remark	Ref. No.	Part No.	Description	Remark
C5076	1-130-856-00	FILM	0.0068uF 5%	100V			
C5077	1-119-799-11	ELECT	47uF 20%	16V	D1013	8-719-801-78	DIODE 1SS184
C5078	1-119-799-11	ELECT	47uF 20%	16V	D1014	8-719-801-78	DIODE 1SS184
C5080	1-136-850-11	MYLAR	0.1uF 5%	63V	D2001	8-719-820-05	DIODE 1SS181
C5081	1-119-799-11	ELECT	47uF 20%	16V	D2002	8-719-820-05	DIODE 1SS181
C5084	1-119-799-11	ELECT	47uF 20%	16V	D3001	8-719-801-78	DIODE 1SS184
C5085	1-119-825-41	ELECT	22uF 20%	50V	D3002	8-719-801-78	DIODE 1SS184
C5086	1-119-820-31	ELECT	1uF 20%	50V	D3003	8-719-801-78	DIODE 1SS184
C5087	1-130-856-00	FILM	0.0068uF 5%	100V	D3004	8-719-820-05	DIODE 1SS181
C5090	1-130-305-51	FILM	0.022uF 5%	100V	D3005	8-719-801-78	DIODE 1SS184
C5092	1-130-305-51	FILM	0.022uF 5%	100V			<FERRITE BEAD>
C5093	1-119-800-11	ELECT	100uF 20%	25V	FB1001	1-410-397-21	FERRITE BEAD INDUCTOR
C5095	1-136-850-11	MYLAR	0.1uF 5%	63V	FB1002	1-410-397-21	FERRITE BEAD INDUCTOR
C5096	1-136-850-11	MYLAR	0.1uF 5%	63V	FB1003	1-410-397-21	FERRITE BEAD INDUCTOR
C5098	1-130-856-00	FILM	0.0068uF 5%	100V	FB1004	1-410-397-21	FERRITE BEAD INDUCTOR
C5099	1-119-799-11	ELECT	47uF 20%	16V	FB1005	1-410-397-21	FERRITE BEAD INDUCTOR
C5100	1-119-799-11	ELECT	47uF 20%	16V	FB1006	1-410-397-21	FERRITE BEAD INDUCTOR
C5102	1-136-850-11	MYLAR	0.1uF 5%	63V	FB1007	1-410-397-21	FERRITE BEAD INDUCTOR
C5103	1-119-799-11	ELECT	47uF 20%	16V	FB1008	1-410-397-21	FERRITE BEAD INDUCTOR
C5106	1-119-799-11	ELECT	47uF 20%	16V	FB1009	1-410-397-21	FERRITE BEAD INDUCTOR
C5107	1-119-825-41	ELECT	22uF 20%	50V	FB1010	1-410-397-21	FERRITE BEAD INDUCTOR
C5108	1-130-856-00	FILM	0.0068uF 5%	100V	FB1011	1-410-397-21	FERRITE BEAD INDUCTOR
C5110	1-130-305-51	FILM	0.022uF 5%	100V	FB1012	1-410-397-21	FERRITE BEAD INDUCTOR
C5112	1-130-305-51	FILM	0.022uF 5%	100V	FB1013	1-410-397-21	FERRITE BEAD INDUCTOR
C5113	1-119-820-31	ELECT	1uF 20%	50V	FB1014	1-216-813-11	METAL CHIP 220 5% 1/16W
C5114	1-119-800-11	ELECT	100uF 20%	25V	FB1015	1-216-813-11	METAL CHIP 220 5% 1/16W
C5116	1-136-850-11	MYLAR	0.1uF 5%	63V	FB1016	1-216-813-11	METAL CHIP 220 5% 1/16W
C5117	1-136-850-11	MYLAR	0.1uF 5%	63V	FB1017	1-216-813-11	METAL CHIP 220 5% 1/16W
C5120	1-130-856-00	FILM	0.0068uF 5%	100V	FB1018	1-216-813-11	METAL CHIP 220 5% 1/16W
C5121	1-119-799-11	ELECT	47uF 20%	16V	FB1101	1-500-245-11	FERRITE 0uH
C5122	1-119-799-11	ELECT	47uF 20%	16V	FB1102	1-500-245-11	FERRITE 0uH
C5125	1-136-850-11	MYLAR	0.1uF 5%	63V	FB2001	1-410-397-21	FERRITE BEAD INDUCTOR
C5126	1-119-799-11	ELECT	47uF 20%	16V	FB2002	1-410-397-21	FERRITE BEAD INDUCTOR
C5129	1-119-799-11	ELECT	47uF 20%	16V	FB2003	1-500-230-21	INDUCTOR 0uH
C5130	1-119-825-41	ELECT	22uF 20%	50V	FB2004	1-216-809-11	METAL CHIP 100 5% 1/16W
C5131	1-119-820-31	ELECT	1uF 20%	50V	FB3001	1-500-230-21	INDUCTOR 0uH
C5132	1-130-856-00	FILM	0.0068uF 5%	100V	FB4002	1-410-397-21	FERRITE BEAD INDUCTOR
		<CONNECTOR>			FB4004	1-410-397-21	FERRITE BEAD INDUCTOR
CN1002	1-691-769-11	PLUG (MICRO CONNECTOR) 7P			FB4007	1-410-397-21	FERRITE BEAD INDUCTOR
* CN1003	1-564-104-00	PIN, CONNECTOR(3.96MM PITCH)3P			FB4009	1-410-397-21	FERRITE BEAD INDUCTOR
CN1004	1-691-771-11	PLUG (MICRO CONNECTOR) 9P			FB4012	1-410-397-21	FERRITE BEAD INDUCTOR
* CN1005	1-564-241-11	PIN, CONNECTOR(3.96MM PITCH)4P			FB4014	1-410-397-21	FERRITE BEAD INDUCTOR
* CN1006	1-568-826-11	SOCKET, CONNECTOR 7P			FB4101	1-414-233-22	FERRITE 0uH
* CN3001	1-568-936-11	PIN, CONNECTOR 9P			FB4102	1-414-231-22	FERRITE 0uH
* CN3002	1-568-841-11	SOCKET, CONNECTOR 25P			FB4103	1-414-231-22	FERRITE 0uH
CN3003	1-564-506-11	PLUG, CONNECTOR 3P			FB4114	1-216-813-11	METAL CHIP 220 5% 1/16W
CN4002	1-691-160-11	PIN, CONNECTOR 3P			FB4115	1-216-809-11	METAL CHIP 100 5% 1/16W
CN5001	1-691-772-11	PLUG (MICRO CONNECTOR) 10P			FB4116	1-216-809-11	METAL CHIP 100 5% 1/16W
CN5002	1-691-772-21	PLUG (MICRO CONNECTOR) 10P			FB5005	1-410-397-21	FERRITE BEAD INDUCTOR
		<DIODE>			FB5006	1-410-397-21	FERRITE BEAD INDUCTOR
D1001	8-719-025-33	DIODE 02CZ6.2-TE85L					<HEAT SINK>
D1006	8-719-800-76	DIODE 1SS226					
D1007	8-719-800-76	DIODE 1SS226					<IC>
D1008	8-719-800-76	DIODE 1SS226			IC1001	8-759-356-27	IC NJM2129M-TE2
D1009	8-719-800-76	DIODE 1SS226			IC1002	8-759-557-32	IC ADM202EARN-REEL

Ref. No.	Part No.	Description	Remark	Ref. No.	Part No.	Description	Remark
IC1004	8-759-426-99	IC CXD8607N-T6		IC3014	8-759-367-70	IC MC74HC125AFEL	
IC1005	8-759-450-47	IC BA05T		IC3015	8-759-424-19	IC MC74HC126AFEL	
IC1006	8-759-445-59	IC BA033T		IC3016	8-759-387-77	IC TC7WU04F-TE12L	
IC1007	8-749-923-05	IC TORX178B		IC3017	8-759-367-70	IC MC74HC125AFEL	
IC1008	8-759-424-13	IC MC74HC00AFEL		IC3018	8-759-424-65	IC MC74HC574AFEL	
IC1009	8-759-243-19	IC TC7SU04F-TE85L		IC3019	8-759-424-65	IC MC74HC574AFEL	
IC1010	8-749-015-11	IC TORX173(HS)		IC3020	8-759-367-70	IC MC74HC125AFEL	
IC1011	8-749-923-05	IC TORX178B		IC3021	8-759-478-92	IC TC7SET04FU(TE85R)	
IC1012	8-759-424-13	IC MC74HC00AFEL		IC4001	8-759-481-28	IC MSM9404BGS-BK	
IC1013	8-749-923-05	IC TORX178B		IC4002	8-759-044-10	IC CXD2562Q	
IC1014	8-759-424-25	IC MC74HC151FEL		IC4003	8-759-525-43	IC TC74HCT08AF(EL)	
IC1015	8-759-032-50	IC TC74HC241AF(EL)		IC4004	8-759-481-28	IC MSM9404BGS-BK	
IC1016	8-749-923-04	IC TOTX178A		IC4005	8-759-044-10	IC CXD2562Q	
IC1017	8-759-243-19	IC TC7SU04F-TE85L		IC4006	8-759-525-43	IC TC74HCT08AF(EL)	
IC1018	8-749-923-05	IC TORX178B		IC4007	8-759-481-28	IC MSM9404BGS-BK	
IC1019	8-759-557-25	IC CS8414-CSR		IC4008	8-759-044-10	IC CXD2562Q	
IC1020	8-759-525-10	IC TC7SET08F(TE85L)		IC4009	8-759-525-43	IC TC74HCT08AF(EL)	
IC1021	8-759-243-19	IC TC7SU04F-TE85L		IC4010	8-759-557-19	IC MC74VHCU04MEL	
IC1022	8-759-180-84	IC TC7W74F(TE12R)		IC4011	8-759-557-19	IC MC74VHCU04MEL	
IC1023	8-759-367-69	IC MC74HC74AFEL		IC4012	8-759-243-19	IC TC7SU04F-TE85L	
IC1024	8-759-636-55	IC M5218AFP-T1		IC4013	8-759-243-19	IC TC7SU04F-TE85L	
IC1025	8-759-243-19	IC TC7SU04F-TE85L		IC4102	8-759-525-10	IC TC7SET08F(TE85L)	
IC1026	8-759-031-84	IC TC7S04F(TE85R)		IC4103	8-759-525-10	IC TC7SET08F(TE85L)	
IC1027	8-759-031-84	IC TC7S04F(TE85R)		IC4111	8-759-180-84	IC TC7W74F(TE12R)	
IC1028	8-759-031-84	IC TC7S04F(TE85R)		IC4112	8-759-180-84	IC TC7W74F(TE12R)	
IC1051	8-759-175-30	IC NJM78L12UA-TE1		IC4113	8-759-180-84	IC TC7W74F(TE12R)	
IC2001	8-759-424-65	IC MC74HC574AFEL		IC5001	8-759-371-51	IC CXA8042AS	
IC2002	8-759-445-59	IC BA033T		IC5002	8-759-296-74	IC AD712JR-REEL	
IC2003	8-759-445-59	IC BA033T		IC5003	8-759-371-51	IC CXA8042AS	
IC2004	8-759-488-94	IC IDT71V256SA15Y-TL		IC5004	8-759-296-74	IC AD712JR-REEL	
IC2005	8-752-391-87	IC CXD2712R		IC5005	8-759-369-74	IC NJM4556AM-TE2	
IC2006	8-759-557-19	IC MC74VHCU04MEL		IC5006	8-759-231-53	IC M5F7805L	
IC2007	8-759-546-46	IC IDT71V124S15YAU-TL		IC5007	8-759-371-51	IC CXA8042AS	
IC2008	8-759-531-30	IC MC74LVX4245-DT		IC5008	8-759-296-74	IC AD712JR-REEL	
IC2009	8-752-391-87	IC CXD2712R		IC5009	8-759-557-23	IC M62362P	
IC2010	8-759-546-46	IC IDT71V124S15YAU-TL		IC5010	8-759-371-51	IC CXA8042AS	
IC2011	8-759-424-65	IC MC74HC574AFEL		IC5011	8-759-296-74	IC AD712JR-REEL	
IC2012	8-759-424-65	IC MC74HC574AFEL		IC5012	8-759-369-74	IC NJM4556AM-TE2	
IC2013	8-759-546-46	IC IDT71V124S15YAU-TL		IC5013	8-759-371-51	IC CXA8042AS	
IC2014	8-759-548-82	IC SN74LV541ANSR		IC5014	8-759-296-74	IC AD712JR-REEL	
IC2015	8-759-525-00	IC CXD8751Q		IC5016	8-759-371-51	IC CXA8042AS	
IC2016	8-759-557-26	IC ADSST-AC3-2500		IC5017	8-759-296-74	IC AD712JR-REEL	
IC2017	8-759-456-86	IC TC7SH14F(TE85L)		IC5018	8-759-369-74	IC NJM4556AM-TE2	
IC2018	8-759-082-59	IC TC7W32FU(TE12R)		IC5019	8-759-557-23	IC M62362P	
IC2019	8-759-082-59	IC TC7W32FU(TE12R)				<JACK>	
IC3001	8-759-424-13	IC MC74HC00AFEL		J1001	1-764-188-21	JACK (SMALL TYPE) (DIA. 3.5)	(MONITOR CTRL-A1)
IC3002	8-759-545-07	IC TMP87C447U-4A06		J1002	1-563-330-11	JACK (S-LINK CTRL-A1)	
IC3003	8-759-367-67	IC MC74HC14AFEL		J1003	1-563-330-11	JACK (S-LINK CTRL-A1)	
IC3004	8-759-557-35	IC M51943BML-600C		J1004	1-815-737-11	CONNECTOR, (D) SUB 9P (RS-232C)	
IC3005	8-759-367-62	IC MC74HC157AFEL		J1005	1-568-750-21	JACK, PIN (1P SHIELD TYPE) (LD COAXIAL IN)	
IC3006	8-759-561-42	IC MC74VHC573MEL		J1006	1-568-750-21	JACK, PIN (1P SHIELD TYPE) (DVD COAXIAL IN)	
IC3007	8-759-561-42	IC MC74VHC573MEL		J1007	1-568-750-21	JACK, PIN (1P SHIELD TYPE) (CD COAXIAL IN)	
IC3008	8-759-557-27	IC HD64F2134FA20-CONT		J1008	1-568-750-31	JACK, PIN (1P SHIELD TYPE) (LD COAXIAL IN)	
IC3009	8-759-567-61	IC MBM29F800BA-90PF-FJ-1		J1009	1-764-188-21	JACK (SMALL TYPE) (DIA. 3.5)	(ANALIZER MIC IN)
IC3010	8-759-424-65	IC MC74HC574AFEL					
IC3011	8-759-424-65	IC MC74HC574AFEL					
IC3012	8-759-387-77	IC TC7WU04F-TE12L					
IC3013	8-759-424-14	IC MC74HC02AFEL					

DIGITAL

Ref. No.	Part No.	Description	Remark	Ref. No.	Part No.	Description	Remark
<JUMPER RESISTOR>							
JR2002	1-211-950-11	SHORT CHIP	0	R1037	1-216-809-11	METAL CHIP	100 5% 1/16W
JR2003	1-211-950-11	SHORT CHIP	0	R1038	1-259-995-11	CARBON MELF	1K 2% 1/8W
JR2004	1-211-950-11	SHORT CHIP	0	R1039	1-216-809-11	METAL CHIP	100 5% 1/16W
JR2005	1-211-950-11	SHORT CHIP	0	R1040	1-259-995-11	CARBON MELF	1K 2% 1/8W
JR2006	1-211-950-11	SHORT CHIP	0	R1041	1-259-909-11	CARBON MELF	75 2% 1/8W
JR2009	1-211-950-11	SHORT CHIP	0	R1042	1-216-809-11	METAL CHIP	100 5% 1/16W
JR2010	1-211-950-11	SHORT CHIP	0	R1043	1-216-809-11	METAL CHIP	100 5% 1/16W
JR2012	1-211-950-11	SHORT CHIP	0	R1044	1-260-008-11	CARBON MELF	10K 2% 1/8W
JR2013	1-211-950-11	SHORT CHIP	0	R1045	1-259-909-11	CARBON MELF	75 2% 1/8W
JR2015	1-211-950-11	SHORT CHIP	0	R1046	1-216-041-00	METAL CHIP	470 5% 1/10W
JR2016	1-211-950-11	SHORT CHIP	0	R1047	1-216-809-11	METAL CHIP	100 5% 1/16W
<TRANSISTOR>							
Q1001	8-729-424-08	TRANSISTOR	UN2111	R1048	1-216-809-11	METAL CHIP	100 5% 1/16W
Q1002	8-729-230-49	TRANSISTOR	2SC2712-YG	R1049	1-216-073-91	RES-CHIP	10K 5% 1/10W
Q2002	8-729-230-49	TRANSISTOR	2SC2712-YG	R1051	1-216-821-11	METAL CHIP	1K 5% 1/16W
Q3001	8-729-421-22	TRANSISTOR	UN2211	R1052	1-216-809-11	METAL CHIP	100 5% 1/16W
Q3002	8-729-230-49	TRANSISTOR	2SC2712-YG	R1053	1-259-979-11	CARBON MELF	47 2% 1/8W
Q3003	8-729-421-22	TRANSISTOR	UN2211	R1054	1-259-979-11	CARBON MELF	47 2% 1/8W
Q3004	8-729-216-22	TRANSISTOR	2SA1162-G	R1055	1-216-069-00	METAL CHIP	6.8K 5% 1/10W
Q3005	8-729-424-08	TRANSISTOR	UN2111	R1056	1-259-979-11	CARBON MELF	47 2% 1/8W
Q3006	8-729-230-49	TRANSISTOR	2SC2712-YG	R1057	1-216-057-00	METAL CHIP	2.2K 5% 1/10W
Q3007	8-729-230-49	TRANSISTOR	2SC2712-YG	R1058	1-216-057-00	METAL CHIP	2.2K 5% 1/10W
Q3008	8-729-424-08	TRANSISTOR	UN2111	R1059	1-216-025-11	RES-CHIP	100 5% 1/10W
Q3009	8-729-421-22	TRANSISTOR	UN2211	R1060	1-216-025-11	RES-CHIP	100 5% 1/10W
Q3010	8-729-421-22	TRANSISTOR	UN2211	R1061	1-216-025-11	RES-CHIP	100 5% 1/10W
Q3011	8-729-421-22	TRANSISTOR	UN2211	R1062	1-216-065-91	RES-CHIP	4.7K 5% 1/10W
<RESISTOR>							
R1001	1-216-025-11	RES-CHIP	100 5% 1/10W	R1063	1-216-097-11	RES-CHIP	100K 5% 1/10W
R1002	1-216-049-11	RES-CHIP	1K 5% 1/10W	R1064	1-216-113-00	METAL CHIP	470K 5% 1/10W
R1003	1-216-025-11	RES-CHIP	100 5% 1/10W	R1067	1-216-049-11	RES-CHIP	1K 5% 1/10W
R1004	1-216-073-91	RES-CHIP	10K 5% 1/10W	R1073	1-216-097-11	RES-CHIP	100K 5% 1/10W
R1005	1-216-025-11	RES-CHIP	100 5% 1/10W	R1080	1-216-073-91	RES-CHIP	10K 5% 1/10W
R1008	1-259-983-11	CARBON MELF	100 2% 1/8W	R1099	1-216-097-11	RES-CHIP	100K 5% 1/10W
R1009	1-259-983-11	CARBON MELF	100 2% 1/8W	R1102	1-216-097-11	RES-CHIP	100K 5% 1/10W
R1012	1-259-983-11	CARBON MELF	100 2% 1/8W	R2001	1-216-833-11	METAL CHIP	10K 5% 1/16W
R1013	1-259-983-11	CARBON MELF	100 2% 1/8W	R2002	1-216-833-11	METAL CHIP	10K 5% 1/16W
R1014	1-216-025-11	RES-CHIP	100 5% 1/10W	R2003	1-216-833-11	METAL CHIP	10K 5% 1/16W
R1020	1-259-909-11	CARBON MELF	75 2% 1/8W	R2004	1-216-833-11	METAL CHIP	10K 5% 1/16W
R1021	1-259-995-11	CARBON MELF	1K 2% 1/8W	R2005	1-216-833-11	METAL CHIP	10K 5% 1/16W
R1022	1-259-909-11	CARBON MELF	75 2% 1/8W	R2006	1-216-833-11	METAL CHIP	10K 5% 1/16W
R1023	1-260-008-11	CARBON MELF	10K 2% 1/8W	R2007	1-216-833-11	METAL CHIP	10K 5% 1/16W
R1024	1-259-995-11	CARBON MELF	1K 2% 1/8W	R2008	1-216-833-11	METAL CHIP	10K 5% 1/16W
R1025	1-259-909-11	CARBON MELF	75 2% 1/8W	R2010	1-216-833-11	METAL CHIP	10K 5% 1/16W
R1026	1-259-995-11	CARBON MELF	1K 2% 1/8W	R2011	1-216-809-11	METAL CHIP	100 5% 1/16W
R1027	1-259-995-11	CARBON MELF	1K 2% 1/8W	R2012	1-216-809-11	METAL CHIP	100 5% 1/16W
R1028	1-260-008-11	CARBON MELF	10K 2% 1/8W	R2014	1-216-809-11	METAL CHIP	100 5% 1/16W
R1029	1-259-909-11	CARBON MELF	75 2% 1/8W	R2015	1-216-809-11	METAL CHIP	100 5% 1/16W
R1030	1-259-909-11	CARBON MELF	75 2% 1/8W	R2017	1-216-067-00	METAL CHIP	5.6K 5% 1/10W
R1031	1-259-909-11	CARBON MELF	75 2% 1/8W	R2019	1-216-833-11	METAL CHIP	10K 5% 1/16W
R1032	1-216-821-11	METAL CHIP	1K 5% 1/16W	R2021	1-216-833-11	METAL CHIP	10K 5% 1/16W
R1033	1-259-995-11	CARBON MELF	1K 2% 1/8W	R2024	1-216-833-11	METAL CHIP	10K 5% 1/16W
R1034	1-216-809-11	METAL CHIP	100 5% 1/16W	R2044	1-216-833-11	METAL CHIP	10K 5% 1/16W
R1035	1-216-809-11	METAL CHIP	100 5% 1/16W	R2045	1-216-833-11	METAL CHIP	10K 5% 1/16W
R1036	1-216-809-11	METAL CHIP	100 5% 1/16W	R2046	1-216-833-11	METAL CHIP	10K 5% 1/16W
				R2047	1-216-809-11	METAL CHIP	100 5% 1/16W
				R2049	1-216-809-11	METAL CHIP	100 5% 1/16W
				R2054	1-216-809-11	METAL CHIP	100 5% 1/16W
				R2056	1-216-809-11	METAL CHIP	100 5% 1/16W
				R2058	1-216-809-11	METAL CHIP	100 5% 1/16W
				R2060	1-216-809-11	METAL CHIP	100 5% 1/16W

Ref. No.	Part No.	Description			Remark	Ref. No.	Part No.	Description			Remark
R2061	1-216-833-11	METAL CHIP	10K	5%	1/16W	R2131	1-216-833-11	METAL CHIP	10K	5%	1/16W
R2062	1-216-833-11	METAL CHIP	10K	5%	1/16W	R2132	1-216-833-11	METAL CHIP	10K	5%	1/16W
R2063	1-216-073-91	RES-CHIP	10K	5%	1/10W						
R2072	1-216-833-11	METAL CHIP	10K	5%	1/16W	R2133	1-216-833-11	METAL CHIP	10K	5%	1/16W
R2073	1-216-833-11	METAL CHIP	10K	5%	1/16W	R2134	1-216-833-11	METAL CHIP	10K	5%	1/16W
						R2135	1-216-833-11	METAL CHIP	10K	5%	1/16W
R2074	1-216-833-11	METAL CHIP	10K	5%	1/16W	R2136	1-216-833-11	METAL CHIP	10K	5%	1/16W
R2075	1-216-833-11	METAL CHIP	10K	5%	1/16W	R2137	1-216-833-11	METAL CHIP	10K	5%	1/16W
R2076	1-216-833-11	METAL CHIP	10K	5%	1/16W						
R2077	1-216-833-11	METAL CHIP	10K	5%	1/16W	R2138	1-216-833-11	METAL CHIP	10K	5%	1/16W
R2078	1-216-833-11	METAL CHIP	10K	5%	1/16W	R2139	1-216-833-11	METAL CHIP	10K	5%	1/16W
						R2140	1-216-833-11	METAL CHIP	10K	5%	1/16W
R2079	1-216-833-11	METAL CHIP	10K	5%	1/16W	R2141	1-216-073-91	RES-CHIP	10K	5%	1/10W
R2081	1-216-073-91	RES-CHIP	10K	5%	1/10W	R2142	1-216-073-91	RES-CHIP	10K	5%	1/10W
R2082	1-216-073-91	RES-CHIP	10K	5%	1/10W						
R2084	1-216-833-11	METAL CHIP	10K	5%	1/16W	R2143	1-216-833-11	METAL CHIP	10K	5%	1/16W
R2085	1-216-813-11	METAL CHIP	220	5%	1/16W	R2144	1-216-833-11	METAL CHIP	10K	5%	1/16W
						R2145	1-216-833-11	METAL CHIP	10K	5%	1/16W
R2086	1-216-809-11	METAL CHIP	100	5%	1/16W	R3001	1-216-845-11	METAL CHIP	100K	5%	1/16W
R2087	1-216-809-11	METAL CHIP	100	5%	1/16W	R3002	1-216-833-11	METAL CHIP	10K	5%	1/16W
R2088	1-216-809-11	METAL CHIP	100	5%	1/16W						
R2089	1-216-809-11	METAL CHIP	100	5%	1/16W	R3003	1-216-833-11	METAL CHIP	10K	5%	1/16W
R2090	1-216-809-11	METAL CHIP	100	5%	1/16W	R3004	1-216-833-11	METAL CHIP	10K	5%	1/16W
						R3005	1-216-057-00	METAL CHIP	2.2K	5%	1/10W
R2091	1-216-809-11	METAL CHIP	100	5%	1/16W	R3006	1-216-017-91	RES-CHIP	47	5%	1/10W
R2092	1-216-833-11	METAL CHIP	10K	5%	1/16W	R3007	1-216-037-00	METAL CHIP	330	5%	1/10W
R2093	1-216-833-11	METAL CHIP	10K	5%	1/16W						
R2094	1-216-833-11	METAL CHIP	10K	5%	1/16W	R3008	1-216-833-11	METAL CHIP	10K	5%	1/16W
R2095	1-216-833-11	METAL CHIP	10K	5%	1/16W	R3009	1-216-017-91	RES-CHIP	47	5%	1/10W
						R3010	1-216-833-11	METAL CHIP	10K	5%	1/16W
R2096	1-216-833-11	METAL CHIP	10K	5%	1/16W	R3011	1-216-833-11	METAL CHIP	10K	5%	1/16W
R2097	1-216-833-11	METAL CHIP	10K	5%	1/16W	R3012	1-216-065-91	RES-CHIP	4.7K	5%	1/10W
R2098	1-216-833-11	METAL CHIP	10K	5%	1/16W						
R2099	1-216-833-11	METAL CHIP	10K	5%	1/16W	R3013	1-216-797-11	METAL CHIP	10	5%	1/16W
R2100	1-216-833-11	METAL CHIP	10K	5%	1/16W	R3014	1-216-833-11	METAL CHIP	10K	5%	1/16W
						R3015	1-216-833-11	METAL CHIP	10K	5%	1/16W
R2101	1-216-833-11	METAL CHIP	10K	5%	1/16W	R3016	1-216-121-11	RES-CHIP	1M	5%	1/10W
R2102	1-216-809-11	METAL CHIP	100	5%	1/16W	R3017	1-216-833-11	METAL CHIP	10K	5%	1/16W
R2103	1-216-833-11	METAL CHIP	10K	5%	1/16W						
R2104	1-216-057-00	METAL CHIP	2.2K	5%	1/10W	R3018	1-216-065-91	RES-CHIP	4.7K	5%	1/10W
R2105	1-216-065-91	RES-CHIP	4.7K	5%	1/10W	R3019	1-216-073-91	RES-CHIP	10K	5%	1/10W
											(US,CND)
R2106	1-216-833-11	METAL CHIP	10K	5%	1/16W	R3020	1-216-073-91	RES-CHIP	10K	5%	1/10W
R2109	1-216-833-11	METAL CHIP	10K	5%	1/16W						(EXCEPT US,CND)
R2110	1-216-833-11	METAL CHIP	10K	5%	1/16W	R3021	1-216-833-11	METAL CHIP	10K	5%	1/16W
R2111	1-216-833-11	METAL CHIP	10K	5%	1/16W	R3022	1-216-805-11	METAL CHIP	47	5%	1/16W
R2112	1-216-833-11	METAL CHIP	10K	5%	1/16W						
						R3023	1-216-805-11	METAL CHIP	47	5%	1/16W
R2113	1-216-833-11	METAL CHIP	10K	5%	1/16W	R3024	1-216-121-11	RES-CHIP	1M	5%	1/10W
R2114	1-216-833-11	METAL CHIP	10K	5%	1/16W	R3025	1-216-833-11	METAL CHIP	10K	5%	1/16W
R2115	1-216-833-11	METAL CHIP	10K	5%	1/16W	R3026	1-216-833-11	METAL CHIP	10K	5%	1/16W
R2116	1-216-833-11	METAL CHIP	10K	5%	1/16W	R3027	1-216-833-11	METAL CHIP	10K	5%	1/16W
R2117	1-216-833-11	METAL CHIP	10K	5%	1/16W						
						R3028	1-216-833-11	METAL CHIP	10K	5%	1/16W
R2118	1-216-833-11	METAL CHIP	10K	5%	1/16W	R3029	1-216-833-11	METAL CHIP	10K	5%	1/16W
R2119	1-216-833-11	METAL CHIP	10K	5%	1/16W	R3030	1-216-833-11	METAL CHIP	10K	5%	1/16W
R2120	1-216-809-11	METAL CHIP	100	5%	1/16W	R3031	1-216-073-91	RES-CHIP	10K	5%	1/10W
R2121	1-216-809-11	METAL CHIP	100	5%	1/16W	R3032	1-216-833-11	METAL CHIP	10K	5%	1/16W
R2122	1-216-809-11	METAL CHIP	100	5%	1/16W						
						R3033	1-216-833-11	METAL CHIP	10K	5%	1/16W
R2123	1-216-833-11	METAL CHIP	10K	5%	1/16W	R3034	1-216-833-11	METAL CHIP	10K	5%	1/16W
R2124	1-216-833-11	METAL CHIP	10K	5%	1/16W	R3035	1-216-073-91	RES-CHIP	10K	5%	1/10W
R2125	1-216-821-11	METAL CHIP	1K	5%	1/16W	R3036	1-216-833-11	METAL CHIP	10K	5%	1/16W
R2126	1-216-833-11	METAL CHIP	10K	5%	1/16W	R3037	1-216-833-11	METAL CHIP	10K	5%	1/16W
R2127	1-216-809-11	METAL CHIP	100	5%	1/16W						
						R3038	1-216-833-11	METAL CHIP	10K	5%	1/16W
R2128	1-216-809-11	METAL CHIP	100	5%	1/16W	R3039	1-216-073-91	RES-CHIP	10K	5%	1/10W
R2129	1-216-809-11	METAL CHIP	100	5%	1/16W	R3040	1-216-833-11	METAL CHIP	10K	5%	1/16W
R2130	1-216-833-11	METAL CHIP	10K	5%	1/16W	R3041	1-216-833-11	METAL CHIP	10K	5%	1/16W

DIGITAL

Ref. No.	Part No.	Description			Remark	Ref. No.	Part No.	Description			Remark
R3042	1-216-833-11	METAL CHIP	10K	5%	1/16W	R3105	1-216-073-91	RES-CHIP	10K	5%	1/10W
R3043	1-216-833-11	METAL CHIP	10K	5%	1/16W	R3106	1-216-073-91	RES-CHIP	10K	5%	1/10W
R3044	1-216-833-11	METAL CHIP	10K	5%	1/16W	R3107	1-216-073-91	RES-CHIP	10K	5%	1/10W
R3045	1-216-073-91	RES-CHIP	10K	5%	1/10W	R3108	1-216-073-91	RES-CHIP	10K	5%	1/10W
R3046	1-216-073-91	RES-CHIP	10K	5%	1/10W	R3109	1-216-833-11	METAL CHIP	10K	5%	1/16W
R3047	1-216-833-11	METAL CHIP	10K	5%	1/16W						(EXCEPT US,CND)
R3048	1-216-073-91	RES-CHIP	10K	5%	1/10W	R3110	1-216-833-11	METAL CHIP	10K	5%	1/16W
R3049	1-216-833-11	METAL CHIP	10K	5%	1/16W						(US,CND)
R3050	1-216-833-11	METAL CHIP	10K	5%	1/16W	R3111	1-216-833-11	METAL CHIP	10K	5%	1/16W
R3051	1-216-833-11	METAL CHIP	10K	5%	1/16W	R3112	1-216-833-11	METAL CHIP	10K	5%	1/16W
R3052	1-216-833-11	METAL CHIP	10K	5%	1/16W	R3113	1-216-833-11	METAL CHIP	10K	5%	1/16W
R3053	1-216-833-11	METAL CHIP	10K	5%	1/16W	R3114	1-216-833-11	METAL CHIP	10K	5%	1/16W
R3054	1-216-833-11	METAL CHIP	10K	5%	1/16W	R3115	1-216-833-11	METAL CHIP	10K	5%	1/16W
R3055	1-216-833-11	METAL CHIP	10K	5%	1/16W	R3116	1-216-821-11	METAL CHIP	1K	5%	1/16W
R3056	1-216-809-11	METAL CHIP	100	5%	1/16W	R3117	1-216-833-11	METAL CHIP	10K	5%	1/16W
R3057	1-216-809-11	METAL CHIP	100	5%	1/16W	R3118	1-216-809-11	METAL CHIP	100	5%	1/16W
R3058	1-216-809-11	METAL CHIP	100	5%	1/16W	R3119	1-216-809-11	METAL CHIP	100	5%	1/16W
R3059	1-216-809-11	METAL CHIP	100	5%	1/16W	R3120	1-216-833-11	METAL CHIP	10K	5%	1/16W
R3060	1-216-809-11	METAL CHIP	100	5%	1/16W	R3121	1-216-833-11	METAL CHIP	10K	5%	1/16W
R3061	1-216-809-11	METAL CHIP	100	5%	1/16W	R3122	1-216-833-11	METAL CHIP	10K	5%	1/16W
R3062	1-216-809-11	METAL CHIP	100	5%	1/16W	R3123	1-216-833-11	METAL CHIP	10K	5%	1/16W
R3063	1-216-809-11	METAL CHIP	100	5%	1/16W	R3124	1-216-833-11	METAL CHIP	10K	5%	1/16W
R3064	1-216-809-11	METAL CHIP	100	5%	1/16W	R3125	1-216-833-11	METAL CHIP	10K	5%	1/16W
R3065	1-216-809-11	METAL CHIP	100	5%	1/16W	R3127	1-216-833-11	METAL CHIP	10K	5%	1/16W
R3066	1-216-809-11	METAL CHIP	100	5%	1/16W	R4001	1-216-025-11	RES-CHIP	100	5%	1/10W
R3067	1-216-809-11	METAL CHIP	100	5%	1/16W	R4002	1-216-025-11	RES-CHIP	100	5%	1/10W
R3068	1-216-809-11	METAL CHIP	100	5%	1/16W	R4003	1-216-025-11	RES-CHIP	100	5%	1/10W
R3069	1-216-809-11	METAL CHIP	100	5%	1/16W	R4004	1-259-983-11	CARBON MELF	100	2%	1/8W
R3070	1-216-809-11	METAL CHIP	100	5%	1/16W	R4005	1-259-983-11	CARBON MELF	100	2%	1/8W
R3071	1-216-809-11	METAL CHIP	100	5%	1/16W	R4006	1-216-833-11	METAL CHIP	10K	5%	1/16W
R3072	1-216-809-11	METAL CHIP	100	5%	1/16W	R4007	1-216-833-11	METAL CHIP	10K	5%	1/16W
R3073	1-216-809-11	METAL CHIP	100	5%	1/16W	R4008	1-259-983-11	CARBON MELF	100	2%	1/8W
R3074	1-216-809-11	METAL CHIP	100	5%	1/16W	R4009	1-259-983-11	CARBON MELF	100	2%	1/8W
R3075	1-216-809-11	METAL CHIP	100	5%	1/16W	R4010	1-216-033-00	METAL CHIP	220	5%	1/10W
R3076	1-216-809-11	METAL CHIP	100	5%	1/16W	R4012	1-216-073-91	RES-CHIP	10K	5%	1/10W
R3077	1-216-809-11	METAL CHIP	100	5%	1/16W	R4013	1-216-809-11	METAL CHIP	100	5%	1/16W
R3078	1-216-809-11	METAL CHIP	100	5%	1/16W	R4014	1-216-809-11	METAL CHIP	100	5%	1/16W
R3079	1-216-809-11	METAL CHIP	100	5%	1/16W	R4015	1-216-809-11	METAL CHIP	100	5%	1/16W
R3080	1-216-833-11	METAL CHIP	10K	5%	1/16W	R4016	1-216-809-11	METAL CHIP	100	5%	1/16W
R3081	1-216-025-11	RES-CHIP	100	5%	1/10W	R4017	1-259-983-11	CARBON MELF	100	2%	1/8W
R3088	1-216-833-11	METAL CHIP	10K	5%	1/16W	R4018	1-259-983-11	CARBON MELF	100	2%	1/8W
R3089	1-216-833-11	METAL CHIP	10K	5%	1/16W	R4019	1-259-983-11	CARBON MELF	100	2%	1/8W
R3090	1-216-833-11	METAL CHIP	10K	5%	1/16W	R4020	1-259-983-11	CARBON MELF	100	2%	1/8W
R3091	1-216-833-11	METAL CHIP	10K	5%	1/16W	R4021	1-216-809-11	METAL CHIP	100	5%	1/16W
R3092	1-216-097-11	RES-CHIP	100K	5%	1/10W	R4022	1-216-809-11	METAL CHIP	100	5%	1/16W
R3093	1-216-097-11	RES-CHIP	100K	5%	1/10W	R4023	1-259-983-11	CARBON MELF	100	2%	1/8W
R3094	1-216-073-91	RES-CHIP	10K	5%	1/10W	R4024	1-259-983-11	CARBON MELF	100	2%	1/8W
R3095	1-216-073-91	RES-CHIP	10K	5%	1/10W	R4025	1-216-073-91	RES-CHIP	10K	5%	1/10W
R3096	1-216-073-91	RES-CHIP	10K	5%	1/10W	R4026	1-216-073-91	RES-CHIP	10K	5%	1/10W
R3097	1-216-073-91	RES-CHIP	10K	5%	1/10W	R4027	1-259-983-11	CARBON MELF	100	2%	1/8W
R3098	1-216-073-91	RES-CHIP	10K	5%	1/10W	R4028	1-259-983-11	CARBON MELF	100	2%	1/8W
R3099	1-216-073-91	RES-CHIP	10K	5%	1/10W	R4029	1-216-033-00	METAL CHIP	220	5%	1/10W
R3100	1-216-073-91	RES-CHIP	10K	5%	1/10W	R4031	1-216-073-91	RES-CHIP	10K	5%	1/10W
R3101	1-216-073-91	RES-CHIP	10K	5%	1/10W	R4032	1-216-809-11	METAL CHIP	100	5%	1/16W
R3102	1-216-073-91	RES-CHIP	10K	5%	1/10W	R4033	1-216-809-11	METAL CHIP	100	5%	1/16W
R3103	1-216-073-91	RES-CHIP	10K	5%	1/10W	R4034	1-216-809-11	METAL CHIP	100	5%	1/16W
R3104	1-216-073-91	RES-CHIP	10K	5%	1/10W	R4035	1-216-809-11	METAL CHIP	100	5%	1/16W
						R4036	1-259-983-11	CARBON MELF	100	2%	1/8W

DIGITAL	POWER
----------------	--------------

Ref. No.	Part No.	Description	Remark	Ref. No.	Part No.	Description	Remark
R4037	1-259-983-11	CARBON MELF	100 2% 1/8W	R5036	1-259-971-11	CARBON MELF	10 2% 1/8W
R4038	1-259-983-11	CARBON MELF	100 2% 1/8W	R5037	1-259-971-11	CARBON MELF	10 2% 1/8W
R4039	1-259-983-11	CARBON MELF	100 2% 1/8W	R5038	1-259-988-11	CARBON MELF	270 2% 1/8W
R4040	1-216-809-11	METAL CHIP	100 5% 1/16W	R5040	1-259-992-11	CARBON MELF	560 2% 1/8W
R4041	1-216-809-11	METAL CHIP	100 5% 1/16W	R5042	1-259-988-11	CARBON MELF	270 2% 1/8W
R4042	1-259-983-11	CARBON MELF	100 2% 1/8W	R5044	1-259-976-11	CARBON MELF	27 2% 1/8W
R4043	1-259-983-11	CARBON MELF	100 2% 1/8W	R5045	1-259-971-11	CARBON MELF	10 2% 1/8W
R4044	1-216-073-91	RES-CHIP	10K 5% 1/10W	R5046	1-259-971-11	CARBON MELF	10 2% 1/8W
R4045	1-216-073-91	RES-CHIP	10K 5% 1/10W	R5047	1-259-976-11	CARBON MELF	27 2% 1/8W
R4046	1-259-983-11	CARBON MELF	100 2% 1/8W	R5048	1-259-971-11	CARBON MELF	10 2% 1/8W
R4047	1-259-983-11	CARBON MELF	100 2% 1/8W	R5049	1-259-971-11	CARBON MELF	10 2% 1/8W
R4048	1-216-033-00	METAL CHIP	220 5% 1/10W	R5050	1-259-995-11	CARBON MELF	1K 2% 1/8W
R4050	1-216-073-91	RES-CHIP	10K 5% 1/10W	R5051	1-259-971-11	CARBON MELF	10 2% 1/8W
R4051	1-216-809-11	METAL CHIP	100 5% 1/16W	R5052	1-259-971-11	CARBON MELF	10 2% 1/8W
R4052	1-216-809-11	METAL CHIP	100 5% 1/16W	R5053	1-259-988-11	CARBON MELF	270 2% 1/8W
R4053	1-216-809-11	METAL CHIP	100 5% 1/16W	R5055	1-259-992-11	CARBON MELF	560 2% 1/8W
R4054	1-216-809-11	METAL CHIP	100 5% 1/16W	R5057	1-259-995-11	CARBON MELF	1K 2% 1/8W
R4055	1-216-809-11	METAL CHIP	100 5% 1/16W	R5058	1-259-988-11	CARBON MELF	270 2% 1/8W
R4056	1-259-983-11	CARBON MELF	100 2% 1/8W	R5060	1-259-976-11	CARBON MELF	27 2% 1/8W
R4057	1-216-809-11	METAL CHIP	100 5% 1/16W	R5061	1-259-971-11	CARBON MELF	10 2% 1/8W
R4058	1-259-983-11	CARBON MELF	100 2% 1/8W	R5062	1-259-971-11	CARBON MELF	10 2% 1/8W
R4059	1-216-809-11	METAL CHIP	100 5% 1/16W	R5063	1-259-976-11	CARBON MELF	27 2% 1/8W
R4060	1-259-983-11	CARBON MELF	100 2% 1/8W	R5064	1-259-971-11	CARBON MELF	10 2% 1/8W
R4061	1-259-983-11	CARBON MELF	100 2% 1/8W	R5065	1-259-971-11	CARBON MELF	10 2% 1/8W
R4062	1-216-809-11	METAL CHIP	100 5% 1/16W	R5066	1-259-971-11	CARBON MELF	10 2% 1/8W
R4063	1-216-809-11	METAL CHIP	100 5% 1/16W	R5067	1-259-971-11	CARBON MELF	10 2% 1/8W
R4064	1-216-809-11	METAL CHIP	100 5% 1/16W	R5068	1-259-988-11	CARBON MELF	270 2% 1/8W
R4065	1-216-809-11	METAL CHIP	100 5% 1/16W	R5070	1-259-992-11	CARBON MELF	560 2% 1/8W
R4067	1-216-809-11	METAL CHIP	100 5% 1/16W	R5072	1-259-988-11	CARBON MELF	270 2% 1/8W
R5001	1-259-971-11	CARBON MELF	10 2% 1/8W	R5074	1-259-976-11	CARBON MELF	27 2% 1/8W
R5002	1-259-971-11	CARBON MELF	10 2% 1/8W	R5075	1-259-971-11	CARBON MELF	10 2% 1/8W
R5003	1-259-976-11	CARBON MELF	27 2% 1/8W	R5076	1-259-971-11	CARBON MELF	10 2% 1/8W
R5004	1-259-971-11	CARBON MELF	10 2% 1/8W	R5077	1-259-976-11	CARBON MELF	27 2% 1/8W
R5005	1-259-971-11	CARBON MELF	10 2% 1/8W	R5078	1-259-971-11	CARBON MELF	10 2% 1/8W
R5006	1-259-971-11	CARBON MELF	10 2% 1/8W	R5079	1-259-971-11	CARBON MELF	10 2% 1/8W
R5007	1-259-971-11	CARBON MELF	10 2% 1/8W	R5080	1-259-995-11	CARBON MELF	1K 2% 1/8W
R5008	1-259-988-11	CARBON MELF	270 2% 1/8W	R5081	1-259-971-11	CARBON MELF	10 2% 1/8W
R5010	1-259-992-11	CARBON MELF	560 2% 1/8W	R5082	1-259-971-11	CARBON MELF	10 2% 1/8W
R5012	1-259-988-11	CARBON MELF	270 2% 1/8W	R5083	1-259-988-11	CARBON MELF	270 2% 1/8W
R5014	1-259-976-11	CARBON MELF	27 2% 1/8W	R5085	1-259-992-11	CARBON MELF	560 2% 1/8W
R5015	1-259-971-11	CARBON MELF	10 2% 1/8W	R5087	1-259-995-11	CARBON MELF	1K 2% 1/8W
R5016	1-259-971-11	CARBON MELF	10 2% 1/8W	R5088	1-259-988-11	CARBON MELF	270 2% 1/8W
R5017	1-259-976-11	CARBON MELF	27 2% 1/8W	R5090	1-259-976-11	CARBON MELF	27 2% 1/8W
R5018	1-259-971-11	CARBON MELF	10 2% 1/8W			<VIBRATOR>	
R5019	1-259-971-11	CARBON MELF	10 2% 1/8W	X2001	1-767-326-21	OSCILLATOR, CRYSTAL (40MHz)	
R5020	1-259-995-11	CARBON MELF	1K 2% 1/8W	X3001	1-767-938-21	VIBRATOR, CERAMIC (7.28MHz)	
R5021	1-259-971-11	CARBON MELF	10 2% 1/8W	X3002	1-781-088-21	VIBRATOR, CERAMIC (20MHz)	
R5022	1-259-971-11	CARBON MELF	10 2% 1/8W			*****	
R5023	1-259-988-11	CARBON MELF	270 2% 1/8W	*	A-4417-104-A	POWER BOARD, COMPLETE (US,CND)	
R5025	1-259-992-11	CARBON MELF	560 2% 1/8W	*	A-4417-110-A	POWER BOARD, COMPLETE (EXCEPT US,CND)	
R5027	1-259-995-11	CARBON MELF	1K 2% 1/8W			*****	
R5028	1-259-988-11	CARBON MELF	270 2% 1/8W	*	1-535-303-00	WIRE, JUMPER	
R5030	1-259-976-11	CARBON MELF	27 2% 1/8W		2-389-320-01	CUSHION	
R5031	1-259-971-11	CARBON MELF	10 2% 1/8W		4-211-649-01	SCREW (+BV 3X6 B)	
R5032	1-259-971-11	CARBON MELF	10 2% 1/8W		4-974-510-01	SCREW (+BV 3X8 CU)	
R5033	1-259-976-11	CARBON MELF	27 2% 1/8W				
R5034	1-259-971-11	CARBON MELF	10 2% 1/8W				
R5035	1-259-971-11	CARBON MELF	10 2% 1/8W				

POWER

Ref. No.	Part No.	Description	Remark	Ref. No.	Part No.	Description	Remark
		<CAPACITOR>					
C110	1-164-004-11	CERAMIC CHIP	0.1uF 10% 25V	D106	8-719-025-29	DIODE 02CZ5.1-TE85L	
C111	1-164-004-11	CERAMIC CHIP	0.1uF 10% 25V	D107	8-719-060-53	DIODE RBV-2506	
C112	1-126-960-11	ELECT	1uF 20% 50V	D108	8-719-820-05	DIODE 1SS181	
C115	1-119-800-21	ELECT	100uF 20% 25V	D109	8-719-820-05	DIODE 1SS181	
C116	1-164-004-11	CERAMIC CHIP	0.1uF 10% 25V	D110	8-719-025-03	DIODE RBA-402-SL	
C117	1-163-093-00	CERAMIC CHIP	10PF 5% 50V	D111	8-719-025-29	DIODE 02CZ5.1-TE85L	
C118	1-119-840-21	ELECT	470uF 20% 63V	D112	8-719-820-05	DIODE 1SS181	
C119	1-163-093-00	CERAMIC CHIP	10PF 5% 50V	D113	8-719-820-05	DIODE 1SS181	
C120	1-126-955-11	ELECT	4700uF 20% 35V	D114	8-719-820-05	DIODE 1SS181	
C121	1-117-783-11	ELECT	13000uF 20% 16V	D115	8-719-820-05	DIODE 1SS181	
C122	1-119-800-21	ELECT	100uF 20% 25V	D116	8-719-820-05	DIODE 1SS181	
C123	1-119-840-21	ELECT	470uF 20% 63V	D117	8-719-820-05	DIODE 1SS181	
C124	1-126-955-11	ELECT	4700uF 20% 35V	D118	8-719-820-05	DIODE 1SS181	
C125	1-117-783-11	ELECT	13000uF 20% 16V	D119	8-719-820-05	DIODE 1SS181	
C126	1-117-783-11	ELECT	13000uF 20% 16V	D120	8-719-820-05	DIODE 1SS181	
C127	1-117-783-11	ELECT	13000uF 20% 16V	D121	8-719-025-33	DIODE 02CZ6.2-TE85L	
C128	1-119-830-11	ELECT	330uF 20% 25V	D122	8-719-820-05	DIODE 1SS181	
C129	1-126-964-11	ELECT	10uF 20% 50V	D123	8-719-820-05	DIODE 1SS181	
C130	1-119-830-11	ELECT	330uF 20% 25V	D124	8-719-820-05	DIODE 1SS181	
C131	1-126-927-11	ELECT	2200uF 20% 10V	D125	8-719-800-76	DIODE 1SS226	
C133	1-164-004-11	CERAMIC CHIP	0.1uF 10% 25V	D126	8-719-800-76	DIODE 1SS226	
C134	1-164-004-11	CERAMIC CHIP	0.1uF 10% 25V	D127	8-719-820-05	DIODE 1SS181	
C136	1-164-004-11	CERAMIC CHIP	0.1uF 10% 25V	D128	8-719-820-05	DIODE 1SS181	
C137	1-164-004-11	CERAMIC CHIP	0.1uF 10% 25V			<GROUND TERMINAL>	
C138	1-164-004-11	CERAMIC CHIP	0.1uF 10% 25V	E101	1-537-770-21	TERMINAL BOARD, GROUND	
C140	1-164-004-11	CERAMIC CHIP	0.1uF 10% 25V	E102	1-537-770-21	TERMINAL BOARD, GROUND	
C141	1-126-924-11	ELECT	330uF 20% 10V	E103	1-537-770-21	TERMINAL BOARD, GROUND	
C142	1-126-924-11	ELECT	330uF 20% 10V			<IC>	
C144	1-126-964-11	ELECT	10uF 20% 50V	IC101	8-759-636-55	IC M5218AFP-T1	
C145	1-119-800-21	ELECT	100uF 20% 25V	IC102	8-759-632-07	IC M5237L-700A	
C146	1-164-004-11	CERAMIC CHIP	0.1uF 10% 25V	IC103	8-759-604-86	IC M5F7807L	
C148	1-119-800-21	ELECT	100uF 20% 25V	IC104	8-759-604-90	IC M5F7907L	
C149	1-164-004-11	CERAMIC CHIP	0.1uF 10% 25V	IC105	8-759-450-47	IC BA05T	
C150	1-164-222-91	CERAMIC CHIP	0.22uF 25V	IC106	8-759-245-79	IC M5F7905L	
C151	1-136-169-00	MYLAR	0.22uF 5% 50V	IC107	8-759-604-87	IC M5F7818L	
C152	1-136-169-00	MYLAR	0.22uF 5% 50V	IC108	8-759-636-55	IC M5218AFP-T1	
C153	1-164-222-91	CERAMIC CHIP	0.22uF 25V	IC109	8-759-604-91	IC M5F7918L	
C154	1-164-004-11	CERAMIC CHIP	0.1uF 10% 25V			<PHOTO INTERRUPTER>	
C155	1-164-004-11	CERAMIC CHIP	0.1uF 10% 25V	PH101	8-719-936-96	PHOTO COUPLER PC817-B	
C156	1-163-009-91	CERAMIC CHIP	0.001uF 10% 50V	PH102	8-719-936-96	PHOTO COUPLER PC817-B	
C157	1-119-824-31	ELECT	10uF 20% 50V			<TRANSISTOR>	
C158	1-119-824-31	ELECT	10uF 20% 50V	Q101	8-729-216-22	TRANSISTOR 2SA1162-G	
		<CONNECTOR>		Q102	8-729-230-49	TRANSISTOR 2SC2712-YG	
* CN102	1-564-243-11	PIN, CONNECTOR(3.96MM PITCH)6P		Q103	8-729-230-49	TRANSISTOR 2SC2712-YG	
* CN103	1-564-104-00	PIN, CONNECTOR(3.96MM PITCH)3P		Q104	8-729-230-49	TRANSISTOR 2SC2712-YG	
* CN104	1-564-104-00	PIN, CONNECTOR(3.96MM PITCH)3P		Q105	8-729-216-22	TRANSISTOR 2SA1162-G	
* CN105	1-564-241-11	PIN, CONNECTOR(3.96MM PITCH)4P		Q106	8-729-209-15	TRANSISTOR 2SD2012	
CN106	1-691-771-11	PLUG (MICRO CONNECTOR) 9P		Q107	8-729-209-60	TRANSISTOR 2SB1375	
		<DIODE>		Q108	8-729-111-29	TRANSISTOR 2SD1616A-K	
D101	8-719-800-76	DIODE 1SS226		Q109	8-729-230-49	TRANSISTOR 2SC2712-YG	
D102	8-719-025-37	DIODE 02CZ9.1-TE85L		Q110	8-729-140-05	TRANSISTOR 2SB1116A-K	
D103	8-719-025-37	DIODE 02CZ9.1-TE85L		Q111	8-729-209-15	TRANSISTOR 2SD2012	
D104	8-719-800-76	DIODE 1SS226		Q112	8-729-209-60	TRANSISTOR 2SB1375	
D105	8-719-820-05	DIODE 1SS181		Q113	8-729-230-49	TRANSISTOR 2SC2712-YG	

POWER

Ref. No.	Part No.	Description	Remark	Ref. No.	Part No.	Description	Remark
Q114	8-729-216-22	TRANSISTOR 2SA1162-G		R142	1-216-655-11	METAL CHIP 1.5K	1% 1/10W
Q115	8-729-140-05	TRANSISTOR 2SB1116A-K		△R143	1-217-153-00	METAL 0.47	10% 2W
Q116	8-729-111-29	TRANSISTOR 2SD1616A-K		△R144	1-217-153-00	METAL 0.47	10% 2W
Q117	8-729-209-60	TRANSISTOR 2SB1375		△R145	1-217-153-00	METAL 0.47	10% 2W
Q118	8-729-424-08	TRANSISTOR UN2111		△R146	1-217-153-00	METAL 0.47	10% 2W
Q119	8-729-209-60	TRANSISTOR 2SB1375		R150	1-208-462-41	RES-CHIP 10K	2% 1/10W
Q120	8-729-209-60	TRANSISTOR 2SB1375		R151	1-208-462-41	RES-CHIP 10K	2% 1/10W
Q121	8-729-209-60	TRANSISTOR 2SB1375		R152	1-208-445-41	RES-CHIP 2.2K	2% 1/10W
Q123	8-729-018-59	TRANSISTOR 2SB1375(LB-SONY)		R153	1-208-550-41	RES-CHIP 470K	2% 1/10W
Q124	8-729-018-60	TRANSISTOR 2SD2012-LC		R154	1-208-462-41	RES-CHIP 10K	2% 1/10W
Q125	8-729-018-59	TRANSISTOR 2SB1375(LB-SONY)		R155	1-208-462-41	RES-CHIP 10K	2% 1/10W
Q126	8-729-018-60	TRANSISTOR 2SD2012-LC		R156	1-208-462-41	RES-CHIP 10K	2% 1/10W
Q127	8-729-230-49	TRANSISTOR 2SC2712-YG		R157	1-260-298-51	CARBON 3.3	5% 1/2W
		<RESISTOR>		R158	1-208-462-41	RES-CHIP 10K	2% 1/10W
R101	1-208-445-41	RES-CHIP 2.2K	2% 1/10W	R160	1-208-437-41	RES-CHIP 1K	2% 1/10W
R102	1-208-462-41	RES-CHIP 10K	2% 1/10W	R161	1-208-437-41	RES-CHIP 1K	2% 1/10W
R103	1-208-462-41	RES-CHIP 10K	2% 1/10W	R162	1-208-437-41	RES-CHIP 1K	2% 1/10W
R104	1-208-445-41	RES-CHIP 2.2K	2% 1/10W	R163	1-208-437-41	RES-CHIP 1K	2% 1/10W
R105	1-208-445-41	RES-CHIP 2.2K	2% 1/10W	R164	1-208-437-41	RES-CHIP 1K	2% 1/10W
R106	1-208-445-41	RES-CHIP 2.2K	2% 1/10W	R165	1-208-437-41	RES-CHIP 1K	2% 1/10W
R107	1-208-518-41	RES-CHIP 22K	2% 1/10W	R166	1-208-453-41	RES-CHIP 4.7K	2% 1/10W
R108	1-216-641-11	METAL CHIP 390	1% 1/10W	R167	1-208-526-41	RES-CHIP 47K	2% 1/10W
R109	1-216-641-11	METAL CHIP 390	1% 1/10W	R168	1-208-437-41	RES-CHIP 1K	2% 1/10W
R110	1-208-462-41	RES-CHIP 10K	2% 1/10W	R169	1-208-437-41	RES-CHIP 1K	2% 1/10W
R111	1-208-462-41	RES-CHIP 10K	2% 1/10W	R180	1-216-044-00	METAL CHIP 620	5% 1/10W
R112	1-208-526-41	RES-CHIP 47K	2% 1/10W	R181	1-216-044-00	METAL CHIP 620	5% 1/10W
R113	1-208-462-41	RES-CHIP 10K	2% 1/10W	R182	1-216-044-00	METAL CHIP 620	5% 1/10W
R114	1-259-995-11	CARBON MELF 1K	2% 1/8W	R183	1-216-044-00	METAL CHIP 620	5% 1/10W
R115	1-259-995-11	CARBON MELF 1K	2% 1/8W	R184	1-216-044-00	METAL CHIP 620	5% 1/10W
R116	1-208-445-41	RES-CHIP 2.2K	2% 1/10W	R185	1-216-044-00	METAL CHIP 620	5% 1/10W
R117	1-208-462-41	RES-CHIP 10K	2% 1/10W	R186	1-216-044-00	METAL CHIP 620	5% 1/10W
R118	1-259-930-11	CARBON MELF 4.3K	2% 1/8W	R187	1-216-044-00	METAL CHIP 620	5% 1/10W
R119	1-259-995-11	CARBON MELF 1K	2% 1/8W	R188	1-216-121-11	RES-CHIP 1M	5% 1/10W
R120	1-259-999-11	CARBON MELF 2.2K	2% 1/8W	R189	1-216-121-11	RES-CHIP 1M	5% 1/10W
R121	1-259-995-11	CARBON MELF 1K	2% 1/8W	R190	1-216-121-11	RES-CHIP 1M	5% 1/10W
R122	1-259-999-11	CARBON MELF 2.2K	2% 1/8W			<THERMISTOR>	
R123	1-259-930-11	CARBON MELF 4.3K	2% 1/8W	THP159	1-806-882-11	THERMISTOR, POSITIVE	
R124	1-216-627-11	METAL CHIP 100	1% 1/10W	*****			
R125	1-208-462-41	RES-CHIP 10K	2% 1/10W	以阴影和△标志来识别的零部件在安全方面具有关键性。因此只能以规定号码的零部件来更换。			
R126	1-208-462-41	RES-CHIP 10K	2% 1/10W	The components identified by mark △ or dotted line with mark △ are critical for safety. Replace only with part number specified.			
△R127	1-249-451-11	CARBON 2.2	5% 1/4W	Les composants identifiés par une marque △ sont critiques pour la sécurité. Ne les remplacer que par une pièce portant le numéro spécifié.			
△R128	1-249-451-11	CARBON 2.2	5% 1/4W				
△R129	1-249-451-11	CARBON 2.2	5% 1/4W				
△R130	1-249-451-11	CARBON 2.2	5% 1/4W				
R131	1-208-462-41	RES-CHIP 10K	2% 1/10W				
R132	1-208-437-41	RES-CHIP 1K	2% 1/10W				
R133	1-208-437-41	RES-CHIP 1K	2% 1/10W				
R134	1-208-437-41	RES-CHIP 1K	2% 1/10W				
R135	1-216-671-11	METAL CHIP 6.8K	1% 1/10W				
R136	1-208-462-41	RES-CHIP 10K	2% 1/10W				
R137	1-208-445-41	RES-CHIP 2.2K	2% 1/10W				
R138	1-208-774-11	RES-CHIP 470	2% 1/10W				
R139	1-208-462-41	RES-CHIP 10K	2% 1/10W				
R140	1-208-774-11	RES-CHIP 470	2% 1/10W				
R141	1-216-655-11	METAL CHIP 1.5K	1% 1/10W				

